

AS CONSTRUCTED
REVISED DATE

FED. ROAD REG. NO.	DIVISION	PROJECT NO.	SHEET NO.	TOTAL SHEETS
9	COLO.	U 012-2 (13)	25	

Sheet Pile Cutoff

Length	Location
292'-0"	Abut. 1 North
283'-0"	Abut. 1 South
179'-0"	Wing Abut. 4 North
133'-0"	Abut. 4 North
105'-0"	Abut. 4 South
125'-0"	Abut. 4 South

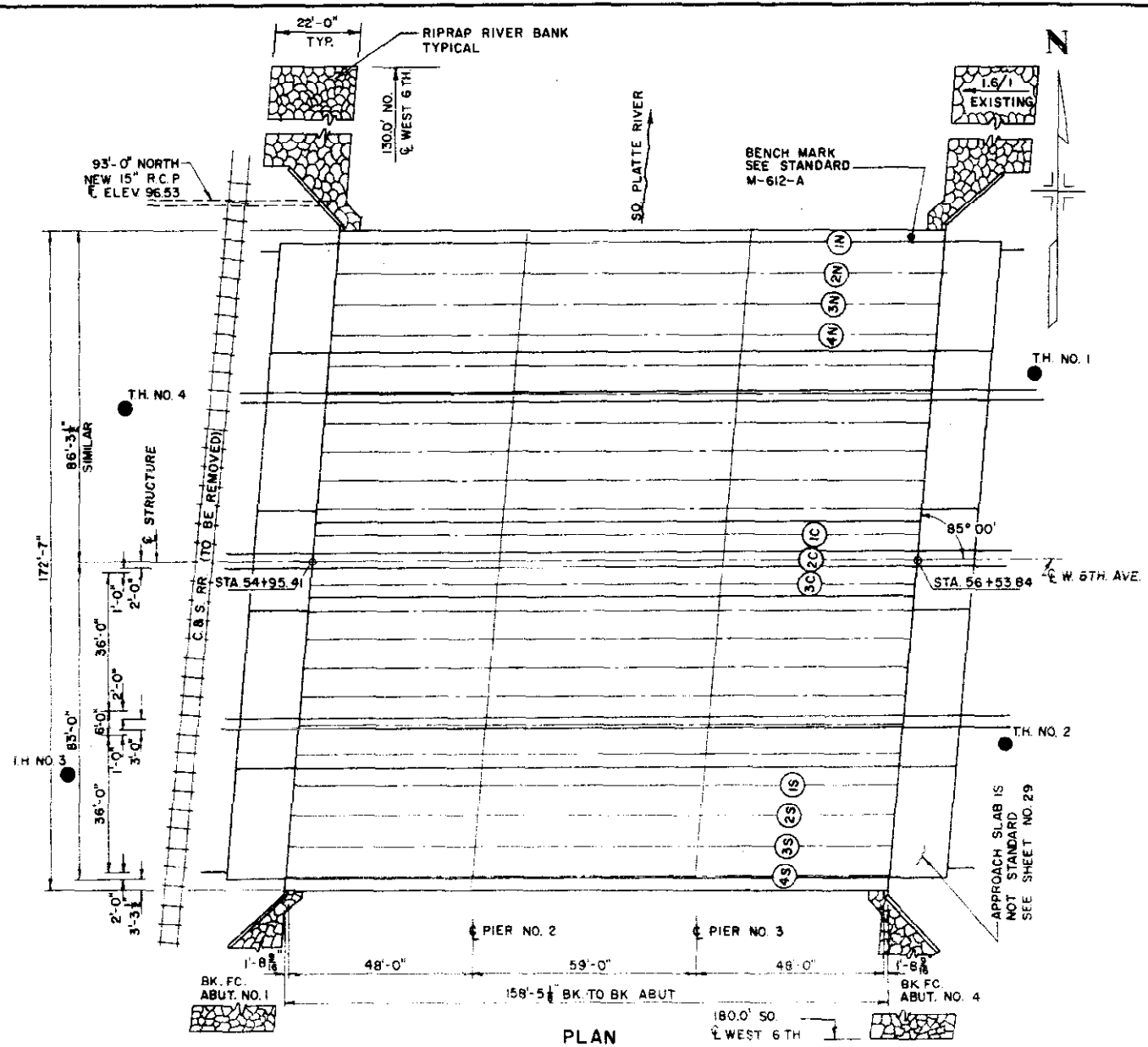
SUMMARY OF QUANTITIES

ITEM	UNIT	DESCRIPTION	ABUTS	PIERS	SUPER STR	TOTAL
202	EA	REM PORT PRESENT STR				2
206	CU YD	STR EXCAV	226.337	630	152.7	1456
206	CU YD	STR BKFL (CL 3)	754.334	515	133.9	1269
403	TON	HBP (GR. E) (HAUL & ASPHALT)	27.17		108.88	136.05
411	GAL	LIQ ASPH MATL (RC-800)	33.26		102.148	135.408
501	SQ FT	STEEL SHEET PILE (TY 1)	2910	2372	2372	2040
506	CU YD	RIPRAP	566.63			631.550
509	L.S.	STR STEEL				L.S.
509	L.S.	STR STEEL (GALV)				L.S.
210	LIN FT	RES RAILING	61		375	436
513	EA	DRAIN PIPE 4IN (-4 FT)			20.36	36.28
601	CU YD	CONCRETE CL A	505.515	204	494.44	1133.955
602	LB	REINF STEEL *	42,050	20,400	84,000	156,450
606	LIN FT	GD RAIL TY 3A (DOUBLE)	50		150	200
613	LIN FT	1/2 IN ELEC COND			401.306	401.306
614	SQ FT	1/2 IN EXP JT MATL	567.842			567.842
615	SQ FT	16 GA GALV SHT STEEL	166			166
617	LIN FT	FENCE CHAIN LINK (36 INCH)	50		150	200

① INCLUDES QUANTITIES FOR 2 APPROACH SLABS.
THERE SHALL BE NO SEPARATE PAYMENT FOR ITEMS MARKED THUS (2) PAYMENT THEREFORE SHALL BE INCLUDED IN THE CONTRACT UNIT PRICE FOR ITEM 601, CONCRETE CL A.
③ DESIGN WEIGHT = 256,780 LB. * Paid as Per Suppliers Invoices 157,509.16
④ DESIGN WEIGHT = 3,625 LB.

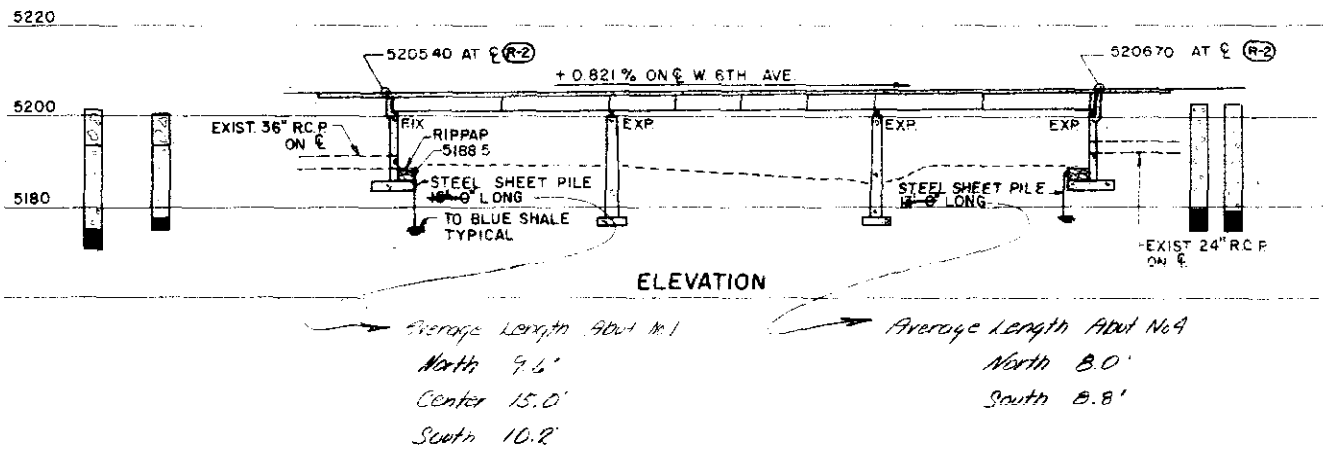
INDEX

SHEET NO.	TITLE
25	GENERAL PLAN & ELEVATION
26	DETAILS ABUTMENT NO. 1 SOUTH SIDE
27	DETAILS ABUTMENT NO. 1 NORTH SIDE
28	PIER DETAILS
29	APPROACH SLAB DETAILS PIER BAR LIST & QUANTITIES
30	DETAILS ABUTMENT NO. 4 NORTH SIDE
31	DETAILS ABUTMENT NO. 4 SOUTH SIDE
32	GIRDER & STRUCTURAL STEEL DETAILS
33	SUPERSTRUCTURE DETAILS
34	DECK PLAN NORTH BRIDGE
35	DECK PLAN SOUTH BRIDGE



LEGEND

- EXISTING
- REMOVE
- NEW CONST.



TEST HOLE LEGEND

- DUMP MATERIAL
- SILT
- CLAY
- SAND
- GRAVEL
- BROWN SHALE
- BLUE SHALE
- EXISTING TEST HOLE

JEFFERSON ASSOCIATES
CIVIL ENGINEERS

DEPARTMENT OF HIGHWAYS
STATE OF COLORADO

GENERAL PLAN AND
ELEVATION

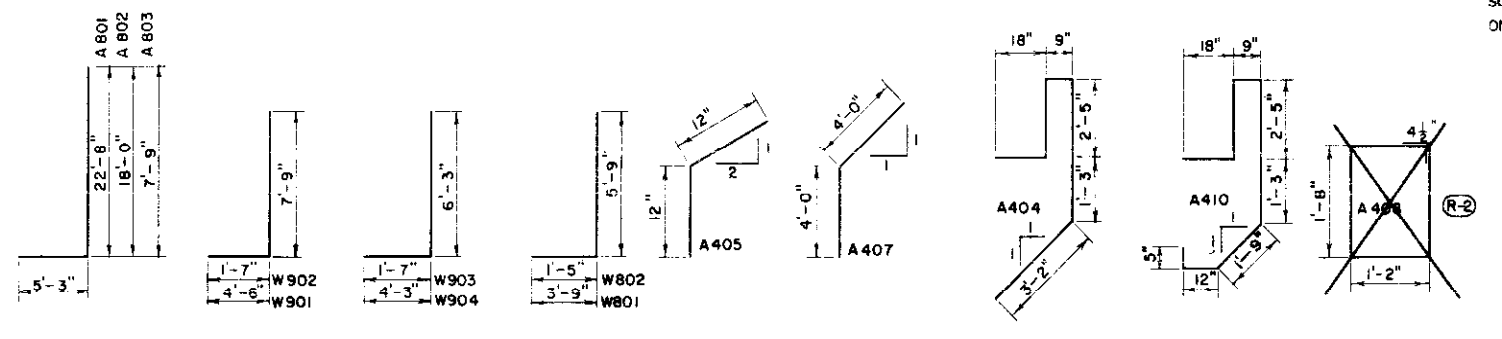
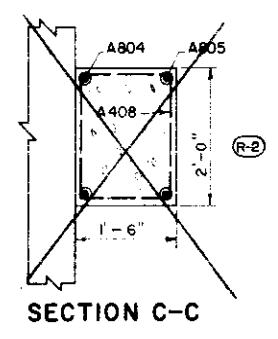
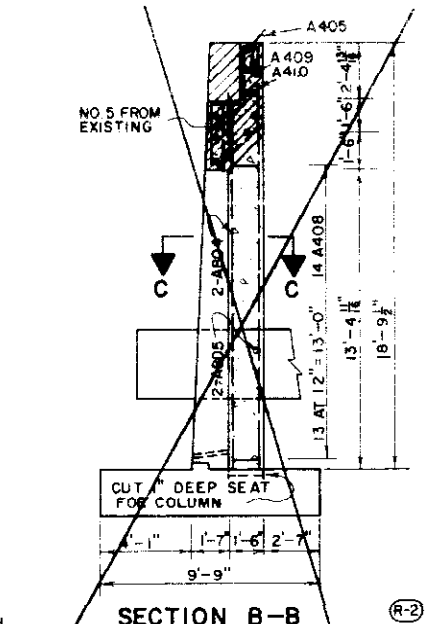
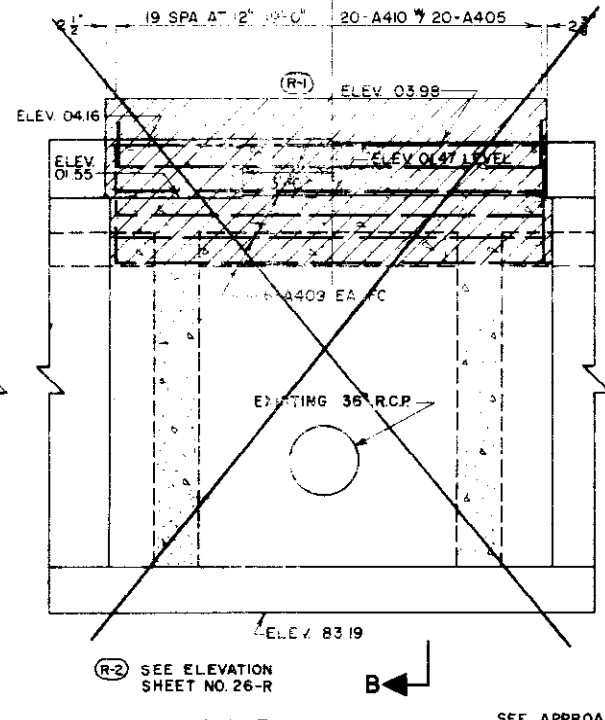
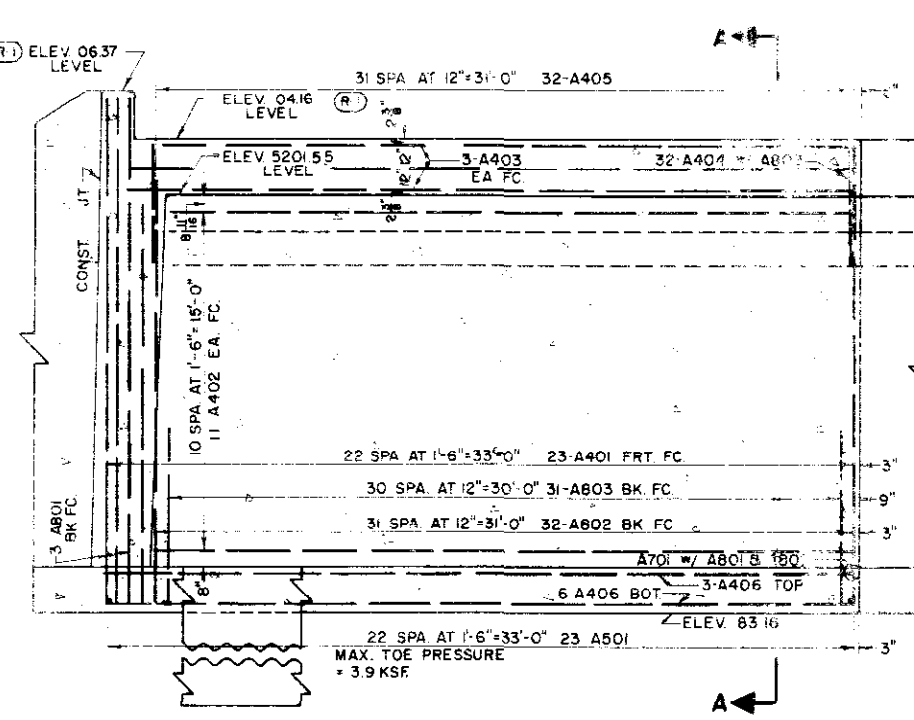
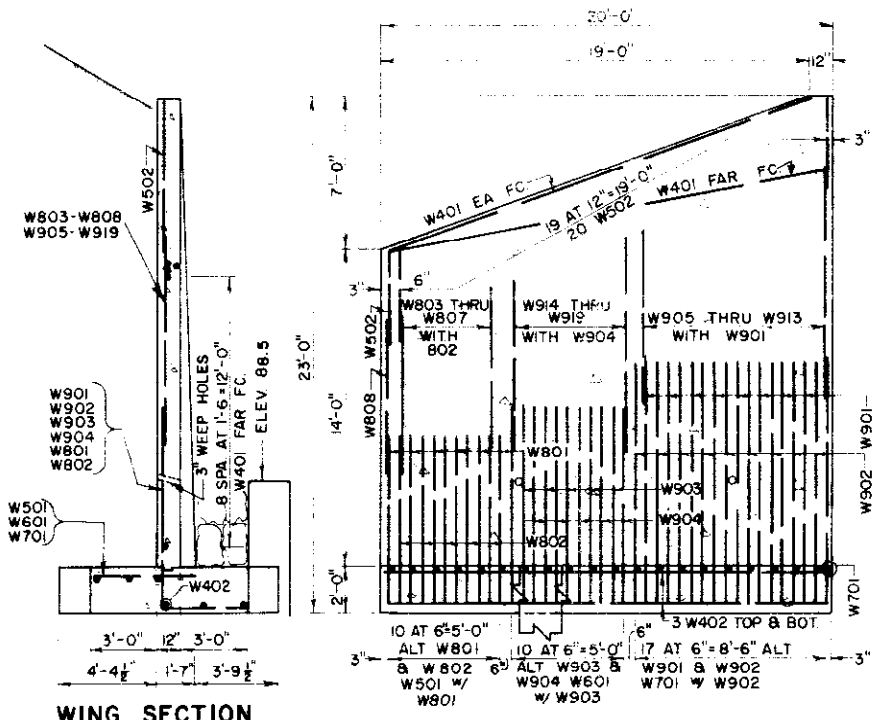
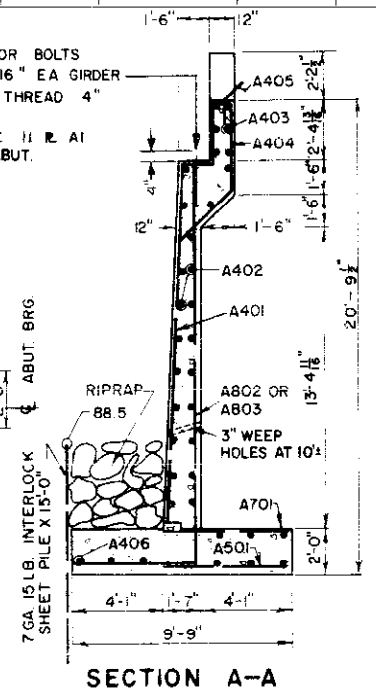
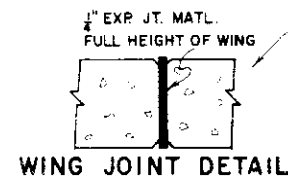
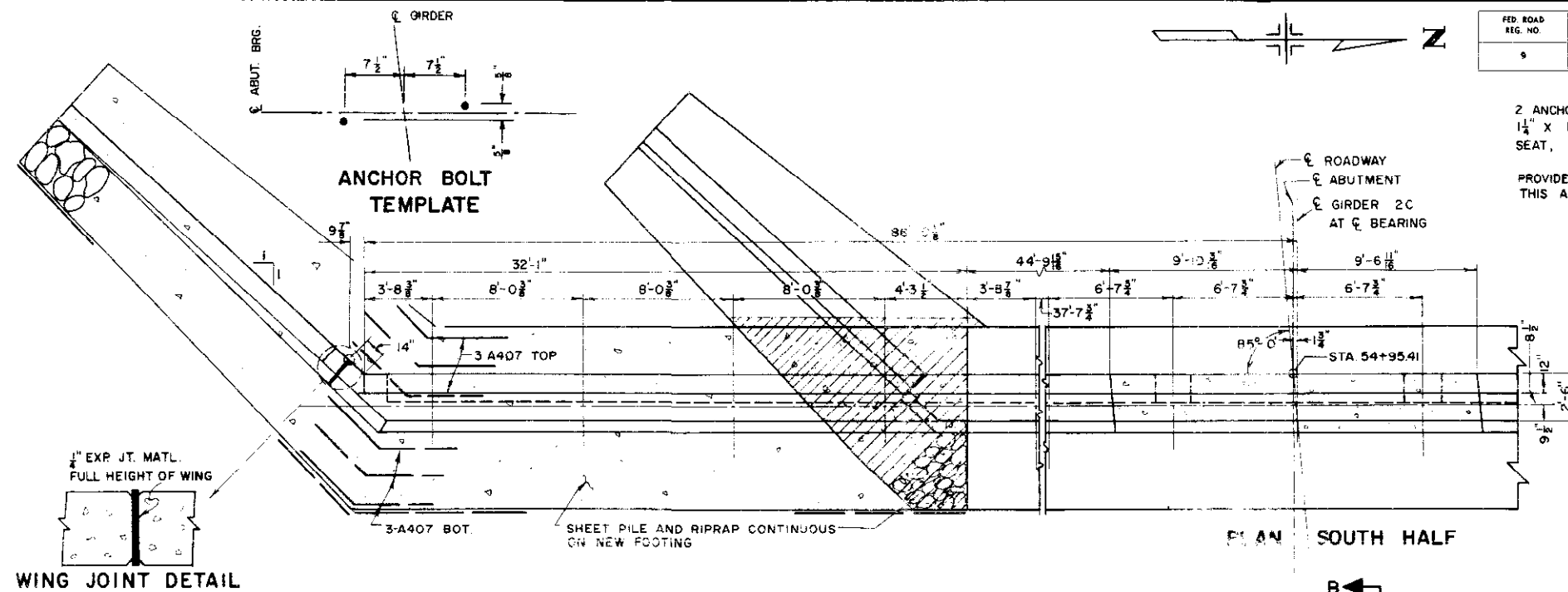
Across SOUTH PLATTE RIVER ON 6th AVE
Sta 54+95.91 TO 56+53.84
Near DENVER Sec. 5 - T. 4 S. R. 68 W.

Designed by M.L.K. Approved by
Made by G.A.M. Bridge Engineer
Checked by T.V.S. Date: 19

REVISIONS

REVISIONS (R-1) 1-23-67 SEAT ELEVATIONS G.D.C.
(R-2) 5-5-67 CENTER WALL G.D.C.

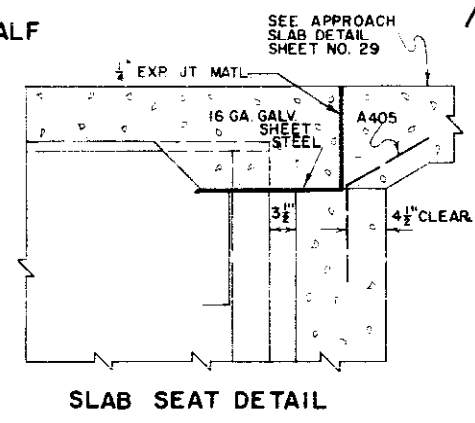
FED. ROAD REG. NO.	DIVISION	PROJECT NO.	SHEET NO.	TOTAL SHEETS
9	COLO.	U 012-2(13)	26	



BAR LIST
BAR SUMMARY
SUMMARY OF QUANTITIES
ON SHEET NO. 27

- EXISTING
- REMOVE
- NEW CONST.

LEGEND



SLAB SEAT DETAIL

NORTH F-16-EE
STRUCTURE NO. SOUTH F-16-EF

JEFFERSON ASSOCIATES
CIVIL ENGINEERS

DEPARTMENT OF HIGHWAYS
STATE OF COLORADO

DETAILS
ABUTMENT NO. 1
SOUTH SIDE

Across SOUTH PLATTE RIVER ON 6TH AVE.
Sta. 54 + 95.41 TO 56 + 53.64
Near DENVER Sec. 5 T. 4S R. 60W

Designed by GDC Approved by _____
Made by WJP Bridge Engineer
Checked by T.V.S. Date: 19

FED. ROAD REG. NO.	DIVISION	PROJECT NO.	SHEET NO.	TOTAL SHEETS
9	COLO.	U 012-2(13)	26-R	



***BAR LIST**

MARK	SIZE	SHAPE	NO. REQD.	LENGTH
A401	4		13	16'-3"
A409	4		16	19'-2"
AR801	8		21	16'-3"
AR802	8		21	5'-0"

***BAR SUMMARY**

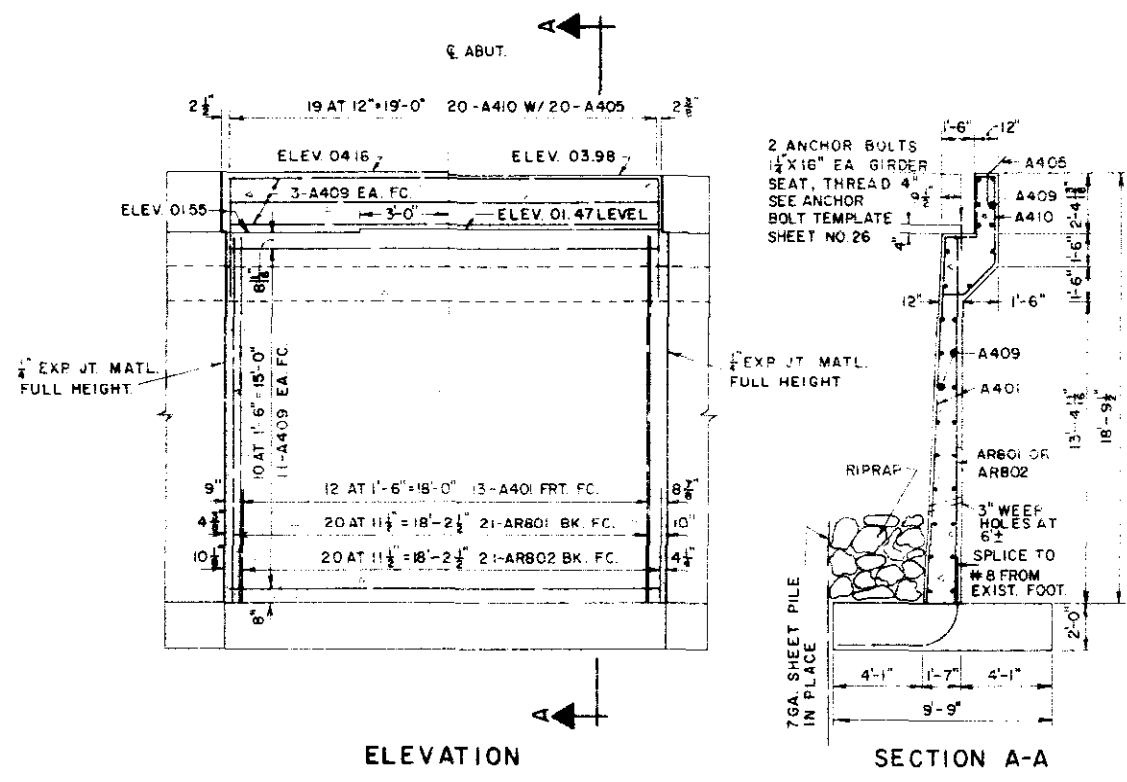
520	L.F. #4 AT 0.668 #/FT. =	350
445	L.F. #8 AT 2.670 #/FT. =	1,190
TOTAL =		1,540

***SUMMARY OF QUANTITIES**

ITEM	UNIT	DESCRIPTION	AMOUNT
206	CU. YD.	STR. EXCAV.	111
206	CU. YD.	STR. BKFL. (CL. 3)	70
501	SQ. FT.	STEEL SHT. PILE (TY I) 799 → 3,000	
506	CU. YD.	RIPRAP	11
601	CU. YD.	CONCRETE CL. A	10
602	LB.	REINF. STEEL 1537 → 1,640	
①	SQ. FT.	1/2 IN. EXP. JT. MATL.	55

* ADDITIONAL QUANTITIES REQUIRED TO CONSTRUCT ABUT. WALL.

① THERE SHALL BE NO SEPARATE PAYMENT FOR ITEMS MARKED THUS ①. PAYMENT THEREFORE SHALL BE INCLUDED IN THE CONTRACT UNIT PRICE FOR ITEM 601, CONCRETE CL. A.



REV. BY	DATE	DESCRIPTION

NORTH F-16-EE
STRUCTURE NO. SOUTH F-16-EF

**DEPARTMENT OF HIGHWAYS
STATE OF COLORADO
REVISED
DETAILS
ABUT. NO. 1**

Across SOUTH PLATTE RIVER ON 6TH AVE.
Sta 54+95.41 TO 56+53.84
Near DENVER Sec. 5 T. 4S R. 98W

Designed by T.V.S. Approved by
Made by G.D.C. Bridge Engineer
Checked by G.D.C. Date: 19

FED. ROAD REG. NO.	DIVISION	PROJECT NO.	SHEET NO.	TOTAL SHEETS
9	COLO.	U012-2 (13)	27	

BAR SUMMARY	
5460	L.F. #4 AT 0.668 #/FT. = 3660
655	L.F. #5 AT 1.043 #/FT. = 685
45	L.F. #6 AT 1.502 #/FT. = 65
475	L.F. #7 AT 2.044 #/FT. = 970
2840	L.F. #8 AT 2.670 #/FT. = 7585
780	L.F. #9 AT 3.400 #/FT. = 2650
TOTAL = 15,615 LB.	

BAR LIST				
MARK	SIZE	SHAPE	REQD	LENGTH
W401	4		24	19'-9"
W402	4		12	24'-0"
A401	4		46	16'-3"
A402	4		44	30'-9"
A403	4		12	31'-9"
A404	4		64	11'-6"
A405	4		84	2'-0"
A406	4		18	32'-0"
A407	4		12	8'-0"
A408	4		28	6'-5"
A409	4		12	19'-2"
A410	4		20	11'-6"

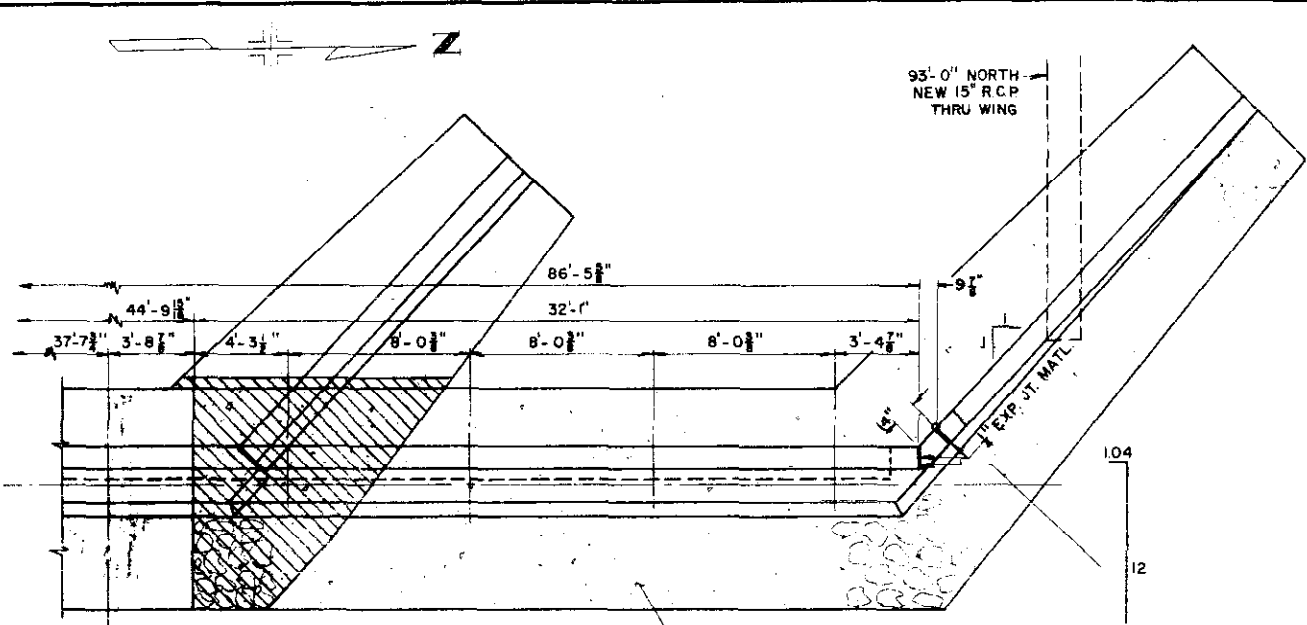
SUMMARY OF QUANTITIES			
SECTION	UNIT	ITEM	AMOUNT
206	CU YD	STR EXCAV	392
206	CU YD	STR BKFL (CL 3)	386
501	SQ FT	STEEL SH. PILE (TY I) 602	1560
506	CU YD	RIPRAP	372
601	L.S.	STR STEEL	L.S.
601	CU YD	CONCRETE CL. A	201
602	LB	REINF STEEL	15,596
①	SQ FT	1" EXP. JT. MATL.	256
①	SQ FT	16 GA. GALV. SH. STEEL	166

THERE SHALL BE NO SEPARATE PAYMENT FOR ITEMS MARKED THUS (①). PAYMENT THEREFORE SHALL BE INCLUDED IN THE CONTRACT UNIT PRICE FOR ITEM 601, CONCRETE CL. A.

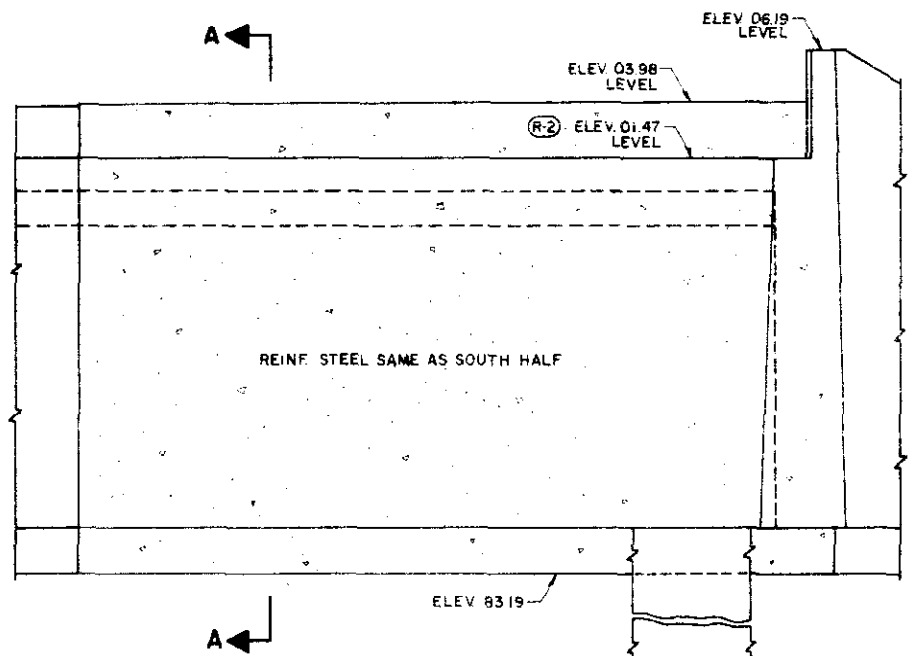
② DESIGN WEIGHT = 145 LB.

W501	5		12	3'-9"
W502	5		40	9'-0"
A301	5		46	5'-5"
W601	6		10	4'-3"
W701	7		20	4'-9"
A701	7		70	5'-5"
W801	8		12	9'-6"
W802	8		10	7'-2"
W803	8		2	4'-1"
W804	8		2	4'-5"
W805	8		2	4'-9"
W806	8		2	5'-1"
W807	8		2	5'-5"
W808	8		2	3'-9"
A801	8		6	27'-11"
A802	8		64	23'-3"
A803	8		62	13'-0"
A804	8		4	16'-3"
A805	8		4	18'-8"

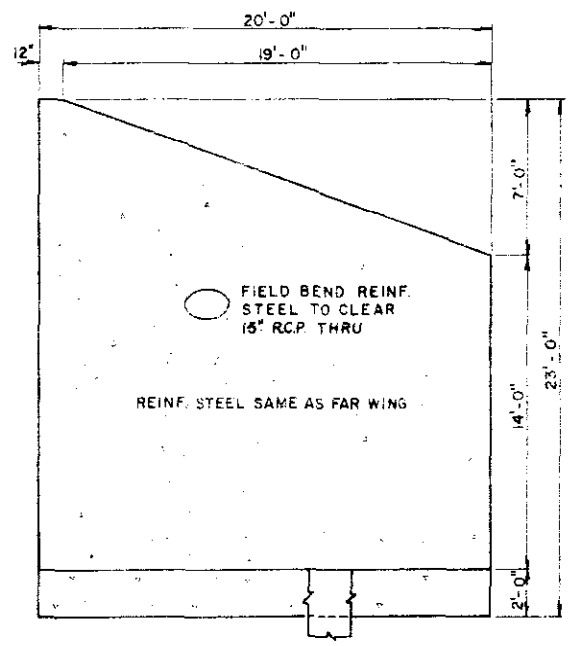
W901	9		18	12'-3"
W902	9		18	9'-4"
W903	9		10	7'-10"
W904	9		10	10'-6"
W905	9		2	6'-10"
W906	9		2	8'-6"
W907	9		2	8'-1"
W908	9		2	7'-9"
W909	9		2	7'-4"
W910	9		2	7'-0"
W911	9		2	6'-7"
W912	9		2	6'-3"
W913	9		2	5'-10"
W914	9		2	7'-0"
W915	9		2	6'-8"
W916	9		2	6'-4"
W917	9		2	6'-0"
W918	9		2	5'-8"
W919	9		2	5'-4"



PLAN NORTH HALF



ELEVATION NORTH HALF



WING ELEVATION

JEFFERSON ASSOCIATES
CIVIL ENGINEERS

DEPARTMENT OF HIGHWAYS
STATE OF COLORADO

DETAILS
ABUTMENT NO. 1
NORTH SIDE

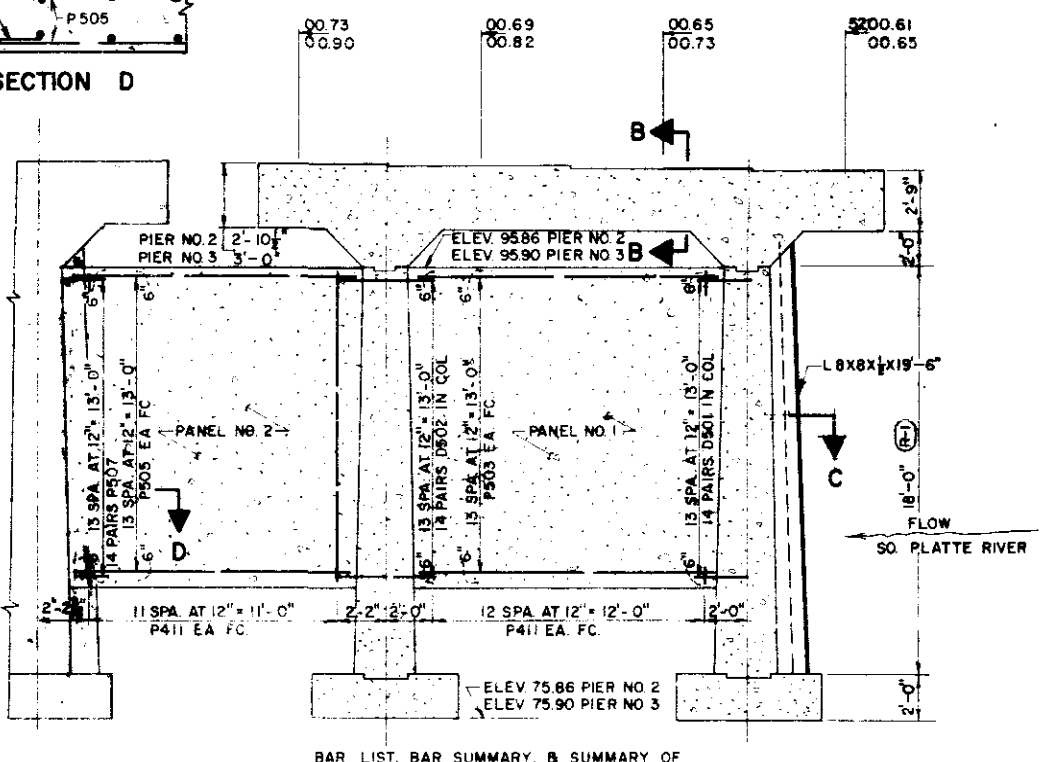
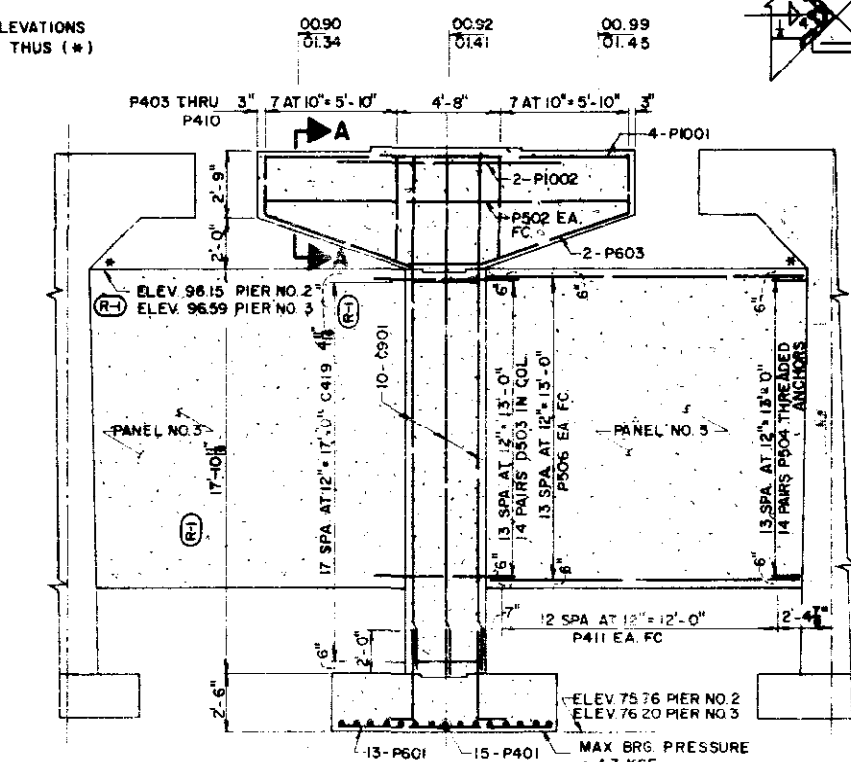
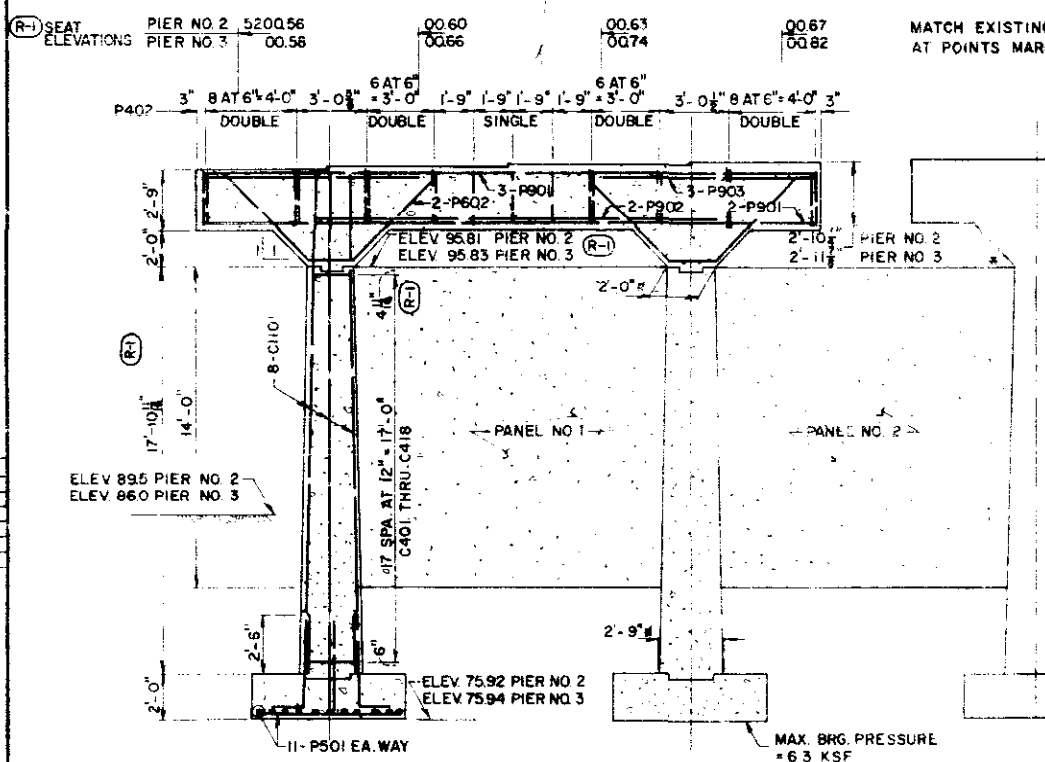
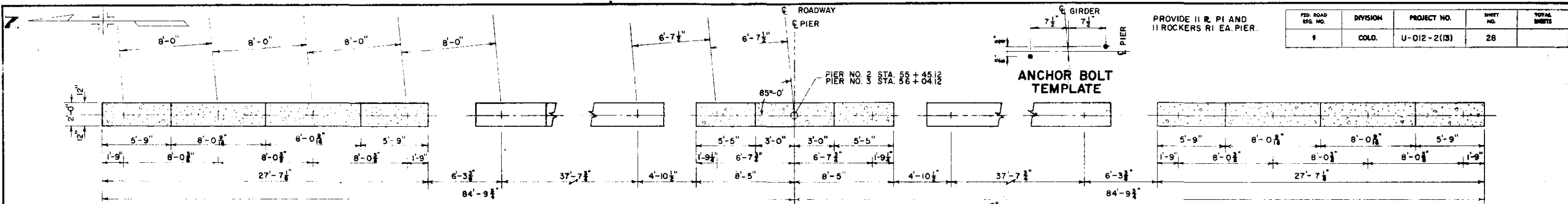
Across SO. PLATTE RIVER ON 6th AVE
Sta. 54+95.41 TO 56+53.84
Near DENVER Sec. 5 T. 4S. R. 68W

Designed by G.D.C. Approved by
Made by J.M.C. Bridge Engineer
Checked by T.V.S. Date: 19

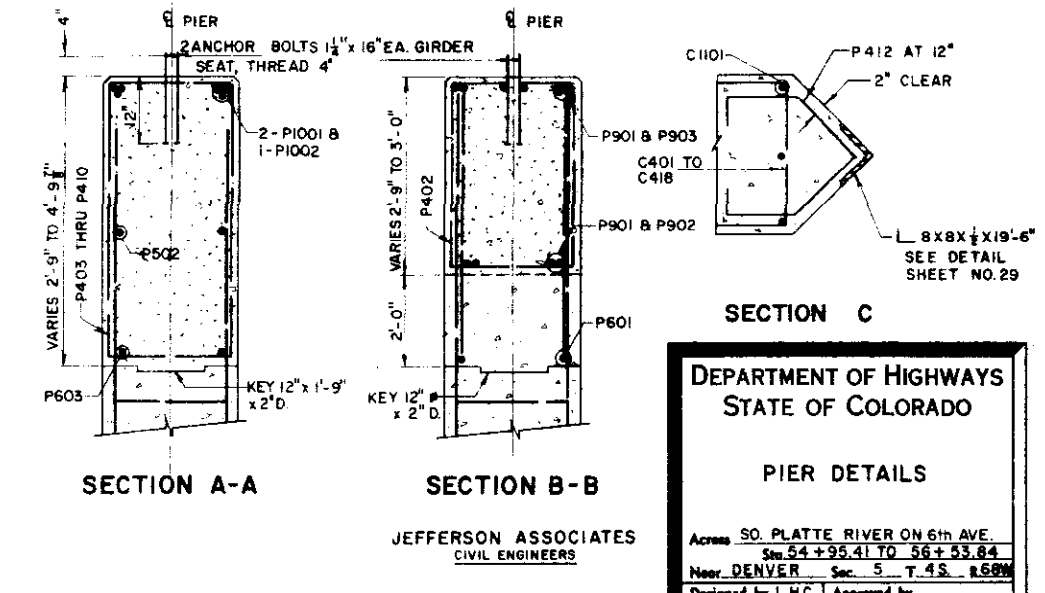
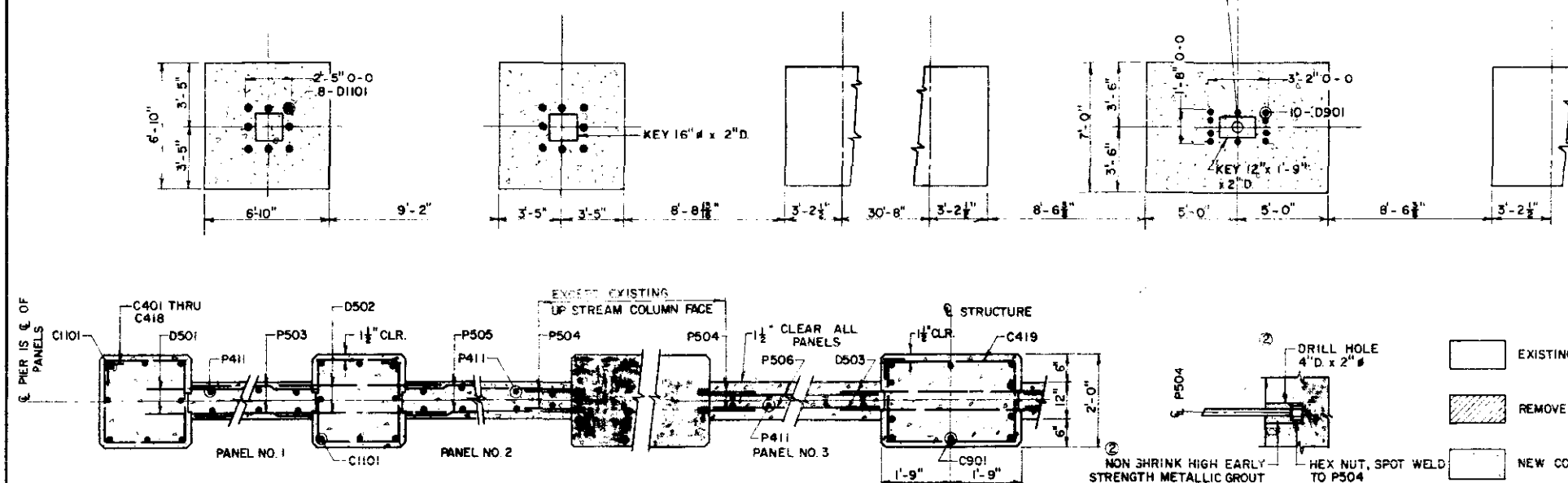
NORTH F-16-EE
STRUCTURE NO. SOUTH F-16-EF

FED. ROAD REG. NO.	DIVISION	PROJECT NO.	SHEET NO.	TOTAL SHEETS
1	COLO.	U-012-2(13)	28	

PROVIDE 11 R. PI AND 11 ROCKERS RI EA. PIER.



BAR LIST, BAR SUMMARY, & SUMMARY OF QUANTITIES ARE ON SHEET NO 29



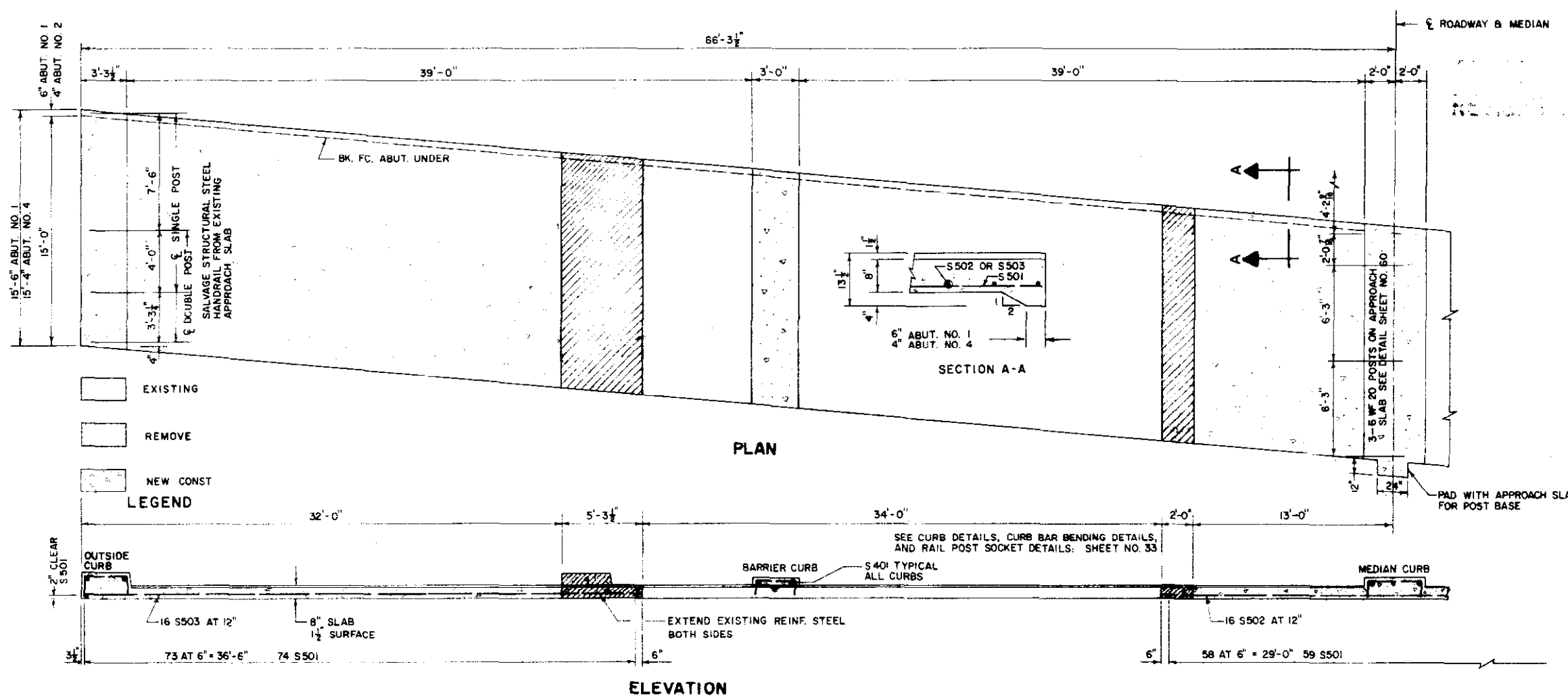
**DEPARTMENT OF HIGHWAYS
STATE OF COLORADO**

PIER DETAILS

Across SO. PLATTE RIVER ON 6th AVE.
Sta. 54 + 95.41 TO 56 + 53.84
Near DENVER Sec. 5 T. 4 S. R. 69 W.

Designed by L.H.C. Approved by _____
Made by L.E.S. Bridge Engineer
Checked by T.V.S. Date: 19__

RD. ROAD LEG. NO.	DIVISION	PROJECT NO.	SHEET NO.	TOTAL SHEETS
9	COLO.	U 012-2 (13)	29	



① BAR LIST

MARK	SIZE	SHAPE	REQD.	LENGTH
C 404	4	[C]	32	6'-8 1/2"
C 501	5	[C]	64	7'-4"
C 403	4	[C]	32	2'-9"
C 405	4	[C]	16	6'-5"
S 401	4	[S]	26	15'-3"
S 501	5	[S]	414	15'-3"
S 502	5	[S]	32	29'-9"
S 503	5	[S]	64	37'-0"

① BAR SUMMARY

800	L.F. # 4	AT 0.668 #/FT.	= 535
9720	L.F. # 5	AT 1.043 #/FT.	= 10,140
			TOTAL = 10,675

① SUMMARY OF QUANTITIES

SECTION	UNIT	ITEM	AMOUNT
206	CU. YD.	STR. EXCAVATION	61
403	TON	HBP (GR E)	17 27
411	GAL	LIQ ASPH MATL/RC-600	26 27
509	L.S.	STR. STEEL	L.S.
509	L.S.	STR. STEEL (GALV)	L.S.
210	LIN FT	RES RAILING	61
601	CU YD	CONCRETE CL. A.	92
602	LB	REINF. STEEL 10,725	10,675
606	LIN. FT.	GD. RAIL TY. 3A DBL	50

① TWO APPROACH SLABS
 ② DESIGN WEIGHT = 150 LB.
 ③ DESIGN WEIGHT = 760 LB.

APPROACH SLAB DETAILS

① BAR SUMMARY

8455	L.F.	# 4	AT 0.668 #/FT.	= 5,650
7125	L.F.	# 5	AT 1.043 #/FT.	= 7,430
545	L.F.	# 6	AT 1.502 #/FT.	= 820
1475	L.F.	# 9	AT 3.400 #/FT.	= 5,015
175	L.F.	# 10	AT 4.303 #/FT.	= 755
1775	L.F.	# 11	AT 5.313 #/FT.	= 9,430
				TOTAL = 29,100

① SUMMARY OF QUANTITIES

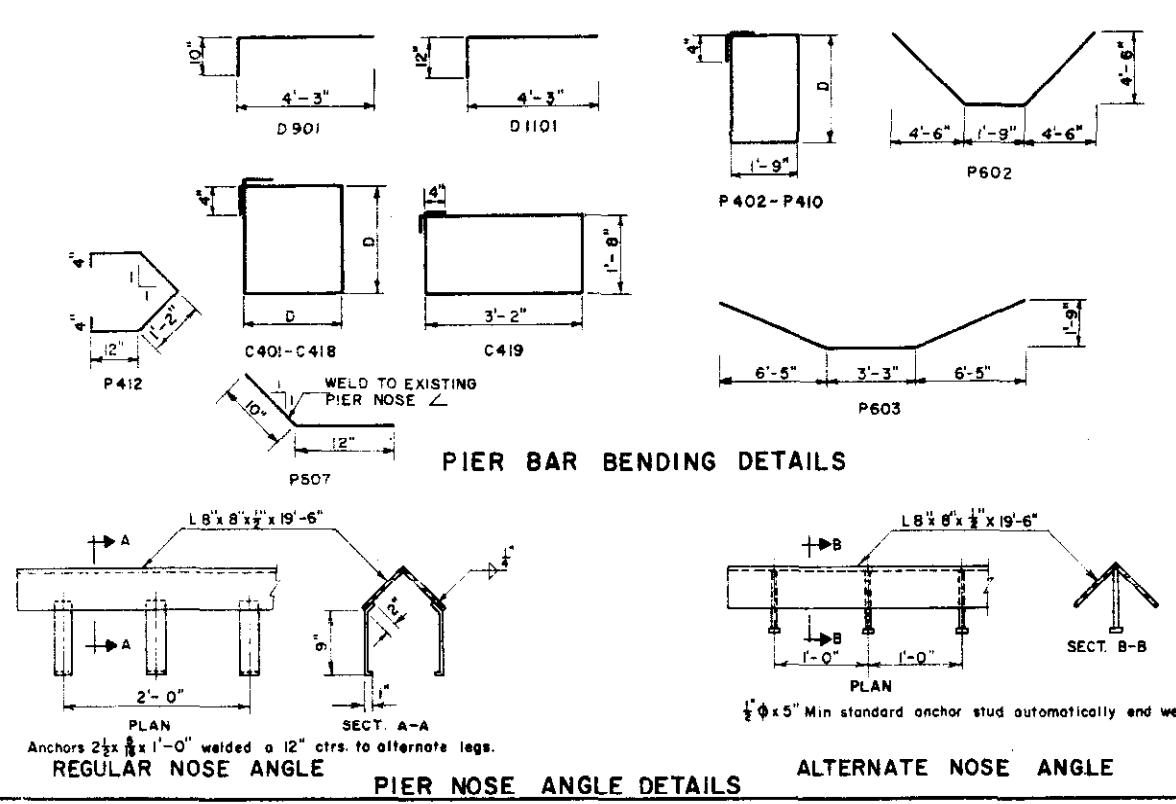
SECTION	UNIT	ITEM	AMOUNT
206	CU. YD.	STR. EXCAV.	630
206	CU. YD.	STR. BKFL. (CL 3)	515
509	L.S.	STR. STEEL	L.S.
601	CU. YD.	CONCRETE CL. A.	204
602	LB.	REINF. STEEL	29,100

THERE SHALL BE NO SEPARATE PAYMENT FOR ITEMS MARKED THUS (C) PAYMENT THEREFORE SHALL BE INCLUDED IN CONTRACT UNIT PRICE FOR ITEM 601, CONCRETE CL. A.
 ① TWO PIERS
 ② DESIGN WEIGHT = 1485 LB.

PIER BAR LIST & QUANTITIES

BAR LIST

MARK	SIZE	D	SHAPE	NO REQD.	LENGTH
C 401	2	5"	[C]	8	10'-4"
C 402	2	4"	[C]	8	10'-2"
C 403	2	4"	[C]	8	10'-0"
C 404	2	3"	[C]	8	9'-10"
C 405	2	3"	[C]	8	9'-8"
C 406	2	2"	[C]	8	9'-6"
C 407	2	2"	[C]	8	9'-4"
C 408	2	1"	[C]	8	9'-2"
C 409	2	1"	[C]	8	9'-0"
C 410	2	0"	[C]	8	8'-10"
C 411	2	0"	[C]	8	8'-8"
C 412	1	11"	[C]	8	8'-6"
C 413	1	11"	[C]	8	8'-4"
C 414	1	10"	[C]	8	8'-2"
C 415	1	10"	[C]	8	8'-0"
C 416	1	9"	[C]	8	7'-10"
C 417	1	9"	[C]	8	7'-8"
C 418	1	8"	[C]	8	7'-6"
C 419	38	10'	[C]	38	10'-4"
P 401	30	6'	[P]	30	6'-6"
P 402	268	7'	[P]	268	7'-5"
P 403	4	7'	[P]	4	7'-7"
P 404	4	8'-1"	[P]	4	8'-1"
P 405	4	8'-7"	[P]	4	8'-7"
P 406	4	9'-1"	[P]	4	9'-1"
P 407	4	9'-7"	[P]	4	9'-7"
P 408	4	10'-1"	[P]	4	10'-1"
P 409	4	10'-7"	[P]	4	10'-7"
P 410	4	11'-1"	[P]	4	11'-1"
P 411	304	13'	[P]	304	13'-6"
P 412	36	5'	[P]	36	5'-0"



JEFFERSON ASSOCIATES
CIVIL ENGINEERS

DEPARTMENT OF HIGHWAYS
STATE OF COLORADO

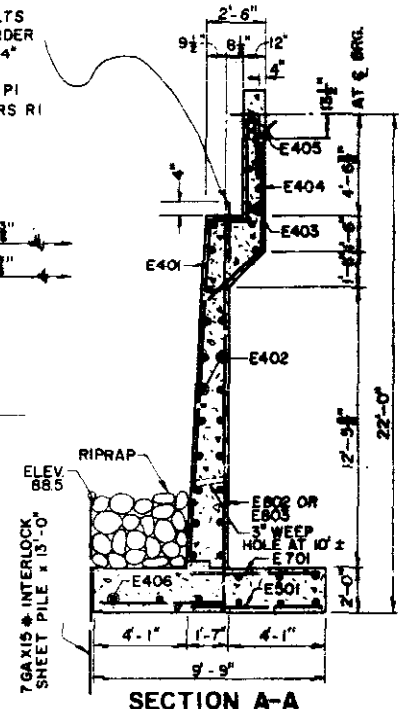
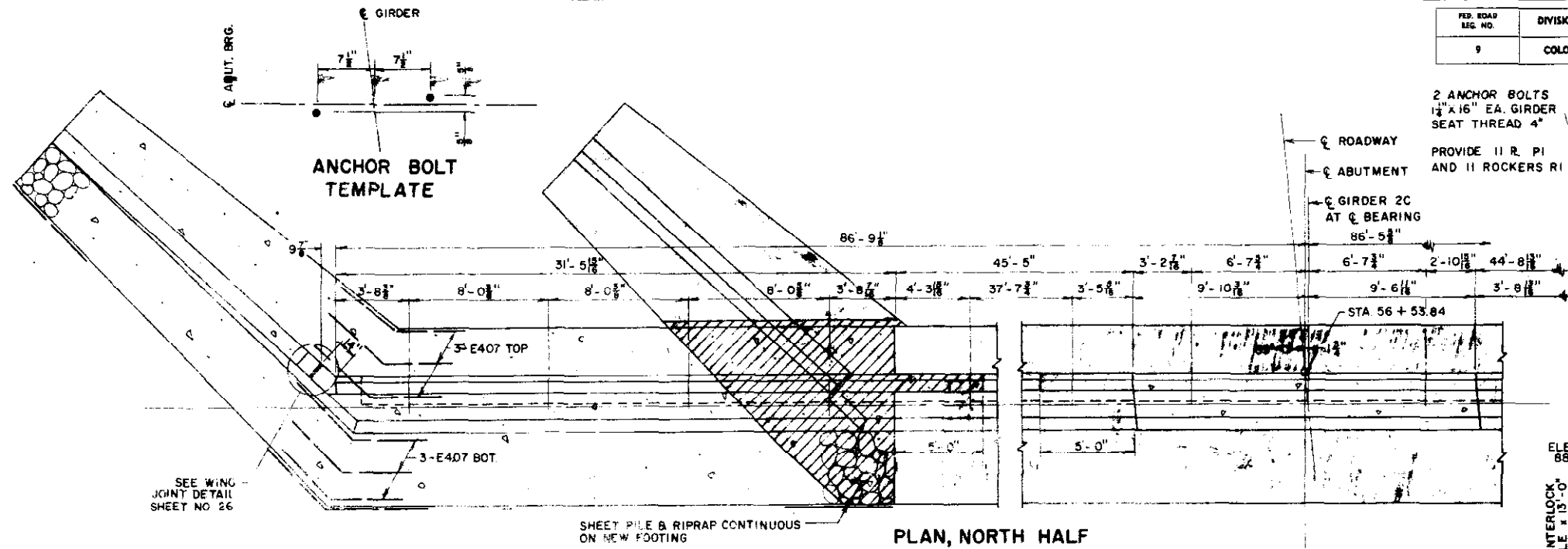
APPROACH SLAB DETAILS
PIER BAR LIST
& QUANTITIES

Across SOUTH PLATTE RIVER ON 6th AVE.
Sta. 54+95.41 TO 56+53.84
Near DENVER Sec. 5 T. 4 S. R. 68 W.

Designed by GDC
Made by WJP
Checked by TVS

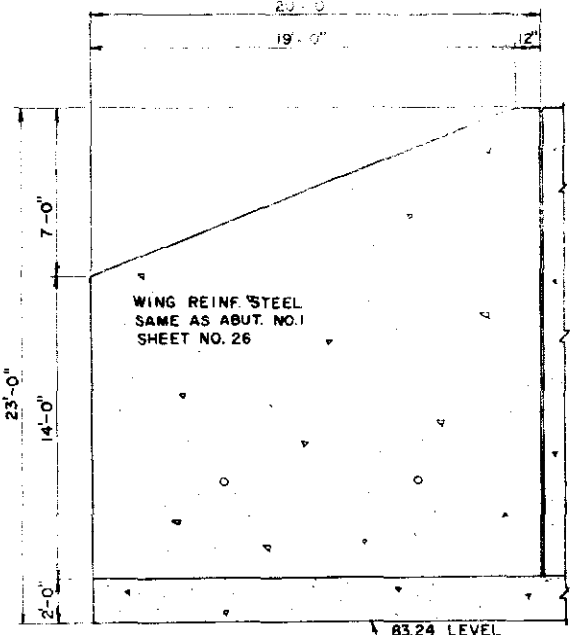
Approved by
Bridge Engineer
Date: 19

FED. ROAD LEG. NO.	DIVISION	PROJECT NO.	SHEET NO.	TOTAL SHEETS
9	COLO.	U 012-2 (13)	30	

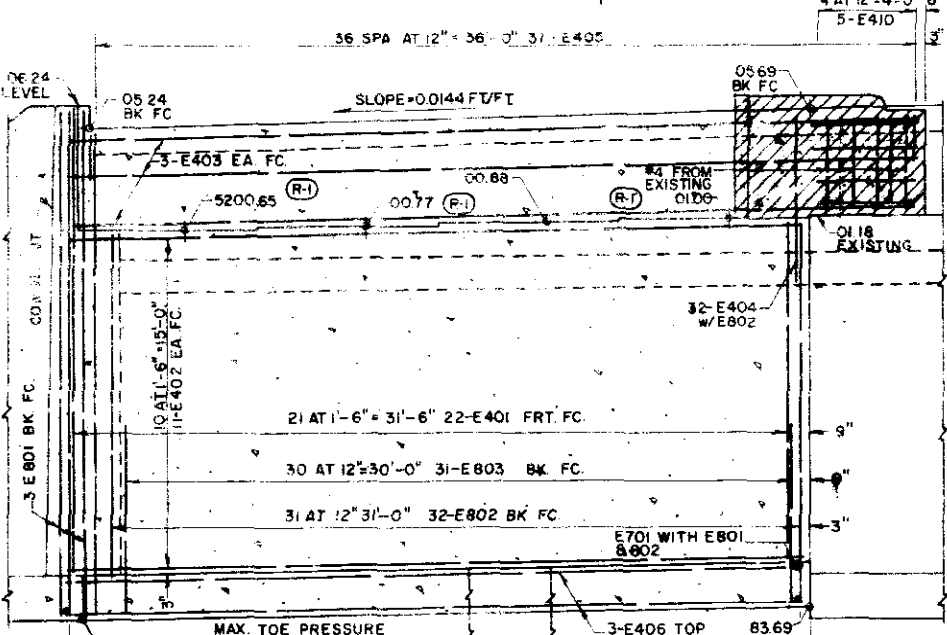


PLAN, NORTH HALF

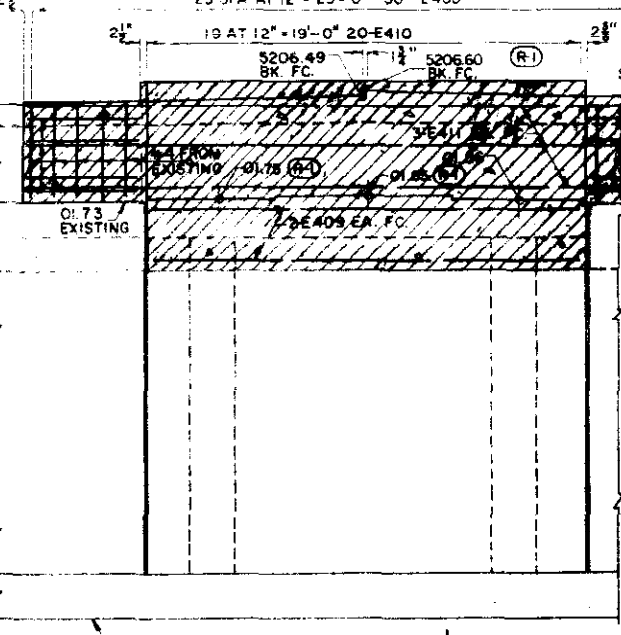
SECTION A-A



WING ELEVATION

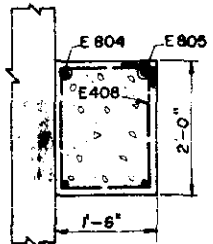


ELEVATION, NORTH HALF

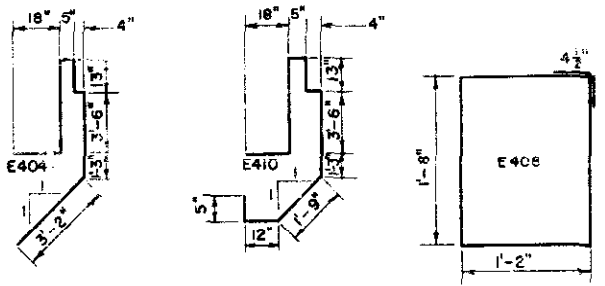
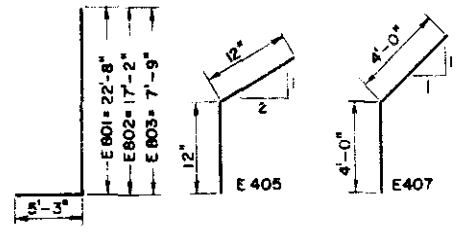


SECTION B-B

WING SECTION



SECTION C-C



- EXISTING
- REMOVE
- NEW CONST

LEGEND

SEE ABUTMENT SECTION AND EXPANSION DEVICE DETAIL SHEET NO. 32
 BAR LIST
 BAR SUMMARY
 SUMMARY OF QUANTITIES
 ON SHEET NO. 31

JEFFERSON ASSOCIATES
 CIVIL ENGINEERS

**DEPARTMENT OF HIGHWAYS
 STATE OF COLORADO**

**DETAILS
 ABUTMENT NO. 4
 NORTH SIDE**

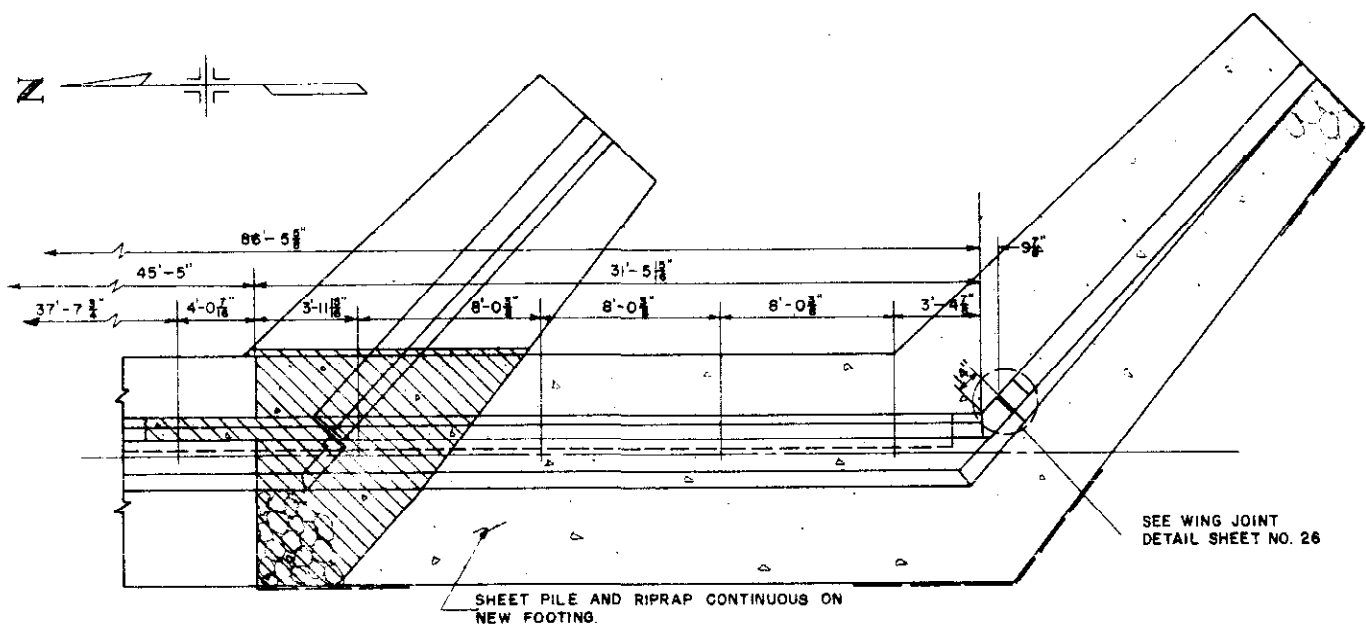
Across SOUTH PLATTE RIVER ON 6th AVE.
 Sta. 54 + 95.41 TO 56 + 53.84
 Near DENVER Sec. 5 T. 4 S. R. 80 W.

Designed by G.D.C. Approved by _____
 Made by J.M.C. Bridge Engineer
 Checked by T.V.S. Date: _____ 19

NORTH F-16-EE
 STRUCTURE NO. SOUTH F-16-EF

AS NOTED REVISIONS

REV. ROAD DIST. NO.	DIVISION	PROJECT NO.	SHEET NO.	TOTAL SHEETS
1	COLO.	U 012-2(15)	31	



PLAN SOUTH HALF

BAR SUMMARY		AMOUNT
5875	L.F. #4 AT 0.668 #/FT.	3925
655	L.F. #5 AT 1.043 #/FT.	685
45	L.F. #6 AT 1.502 #/FT.	65
475	L.F. #7 AT 2.044 #/FT.	970
2795	L.F. #8 AT 2.670 #/FT.	7465
780	L.F. #9 AT 3.400 #/FT.	2650
TOTAL		15,760 LB.

BAR LIST				
MARK	SIZE	SHAPE	REQD.	LENGTH
W401			24	18'-8"
W402			12	24'-0"
E401			44	15'-4"
E402			44	31'-2"
E403			12	36'-3"
E404	4		64	15'-10"
E405			104	2'-0"
E406			18	31'-8"
E407			12	8'-0"
E408			28	6'-5"
E409			4	19'-2"
E410			20	15'-10"
E411			6	29'-2"

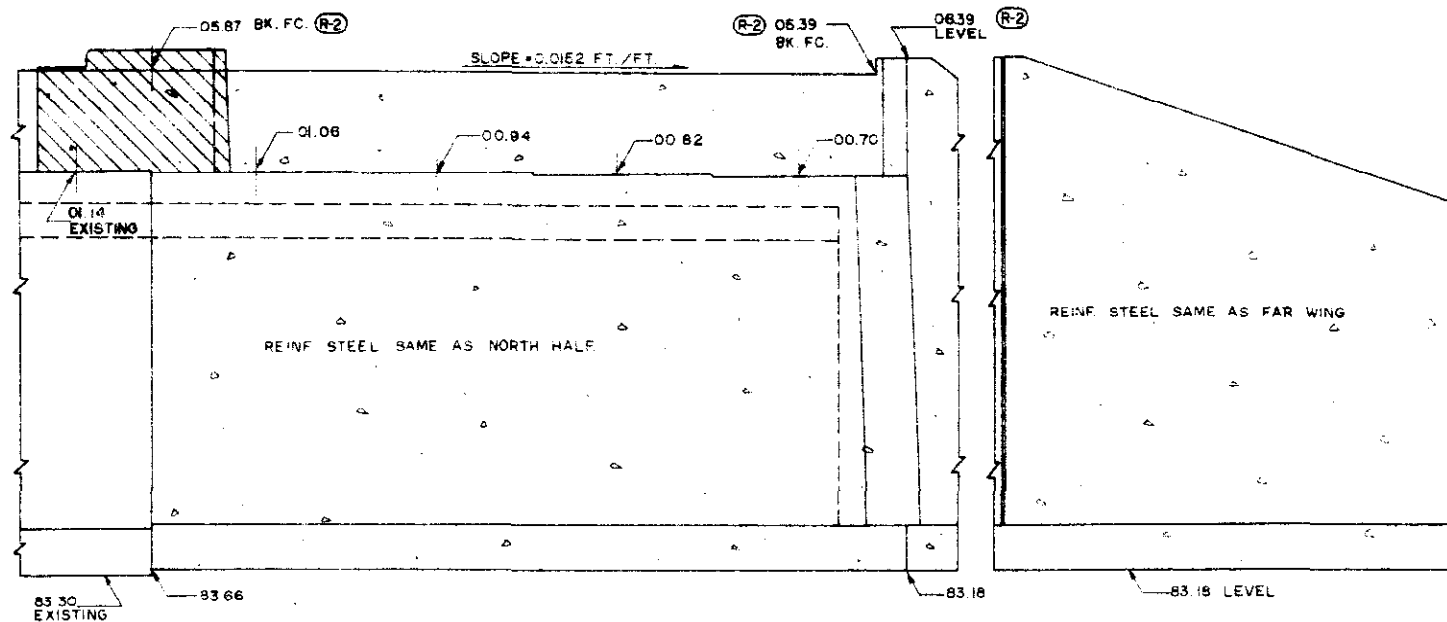
SUMMARY OF QUANTITIES			
SECTION	UNIT	ITEM	AMOUNT
206	CU. YD.	STR. EXCAVATION	434
206	CU. YD.	STR. BACKFILL (CL. 3)	368
501	SQ. FT.	STEEL SHEET PILE (TY. I)	13,809.71
506	CU. YD.	RIPRAP	308.276
509	L.S.	STR. STEEL	L.S.
601	CU. YD.	CONCRETE CL. A	212
602	LB.	REINF. STEEL	15,746 → 15,760
①	SQ. FT.	1/2 EXP. JT. MATL.	258

THERE SHALL BE NO SEPARATE PAYMENT FOR ITEMS MARKED THUS (①) PAYMENT THEREFORE SHALL BE INCLUDED IN THE CONTRACT UNIT PRICE FOR ITEM 601, CONCRETE CL. A.
 ② DESIGN WEIGHT = 145 LB.

W501			12	3'-8"
W502	5		40	9'-0"
E501			46	5'-5"
W601	6		10	4'-3"
W701	7		20	4'-8"
E701			70	5'-5"

W801			12	9'-8"
W802			10	7'-2"
W803			2	4'-1"
W804			2	4'-5"
W805			2	4'-9"
W806			2	5'-1"
W807	8		2	5'-5"
W808			2	3'-9"
E801			8	27'-11"
E802			64	22'-5"
E803			62	13'-0"
E804			4	16'-3"
E805			4	20'-0"

W901			18	12'-3"
W902			18	9'-4"
W903			10	7'-10"
W904			10	10'-6"
W905			2	8'-10"
W906			2	8'-6"
W907			2	8'-1"
W908			2	7'-9"
W909			2	7'-4"
W910	9		2	7'-0"
W911			2	6'-7"
W912			2	6'-3"
W913			2	5'-10"
W914			2	7'-0"
W915			2	6'-8"
W916			2	6'-4"
W917			2	6'-0"
W918			2	5'-8"
W919			2	5'-4"



ELEVATION SOUTH HALF

WING ELEVATION

JEFFERSON ASSOCIATES CIVIL ENGINEERS

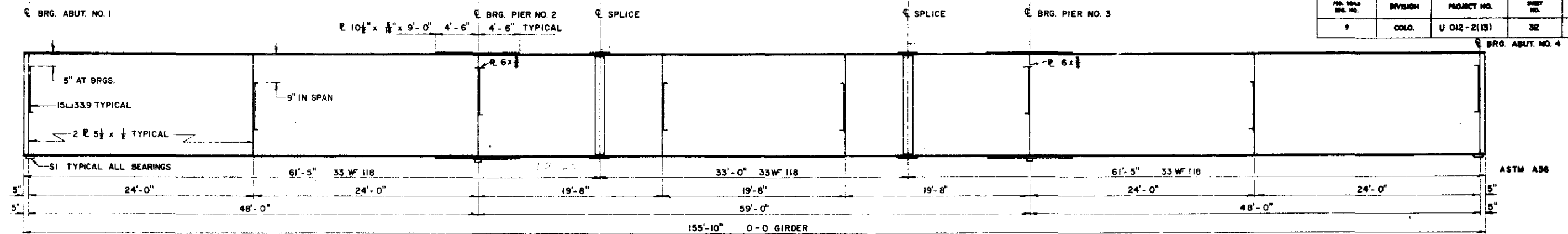
DEPARTMENT OF HIGHWAYS
 STATE OF COLORADO
 DETAILS
 ABUTMENT NO. 4
 SOUTH SIDE

Across SO. PLATTE RIVER ON 6th AVE.
 Sta. 54+95.41 TO 56+53.84
 Near DENVER, Sec. 5, T. 4 S. R. 68 W.

Designed by GDC Approved by
 Made by W.J.P. Bridge Engineer
 Checked by TVS Date: 19

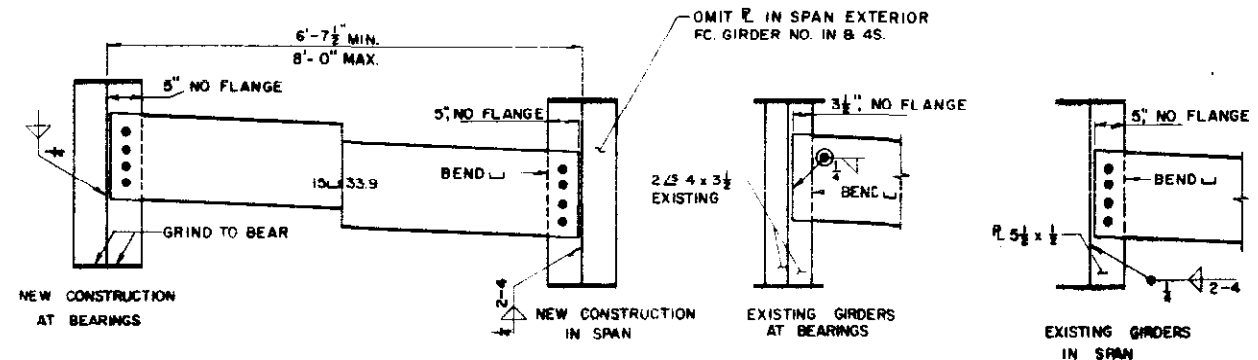
NORTH F-16-EE
 STRUCTURE NO. SOUTH F-16-EF

PROJ. ROAD DIST. NO.	DIVISION	PROJECT NO.	SHEET NO.	TOTAL SHEETS
9	COLO.	U 012-2(13)	32	

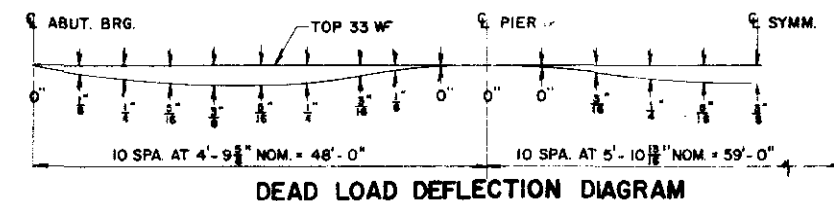


GIRDER ELEVATION

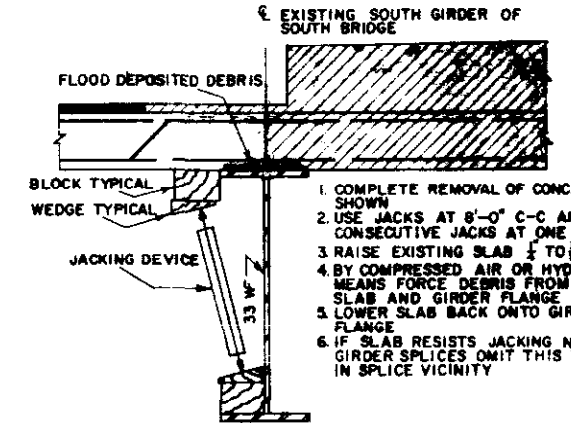
SPLICE BOLTS SHALL BE 1/2" DIAMETER, ALL OTHERS SHALL BE 3/4" DIAMETER. FABRICATE ALL GIRDERS FLAT WITHOUT CAMBER AT SPLICES. SPLICE HOLES SHALL BE SUBPUNCHED 1/8" DIAMETER AND REAMED TO 1/4" DIAMETER WITH GIRDERS ASSEMBLED AND BLOCKED IN FLAT POSITION.



DIAPHRAGM & STIFFENER DETAILS



DEAD LOAD DEFLECTION DIAGRAM

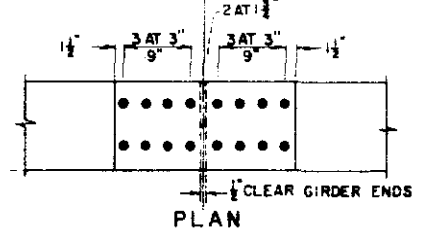


SPECIAL DETAIL FOR EXISTING SOUTH GIRDER OF SOUTH BRIDGE (PAYMENT FOR THIS WORK SHALL BE INCLUDED IN ITEM 202)

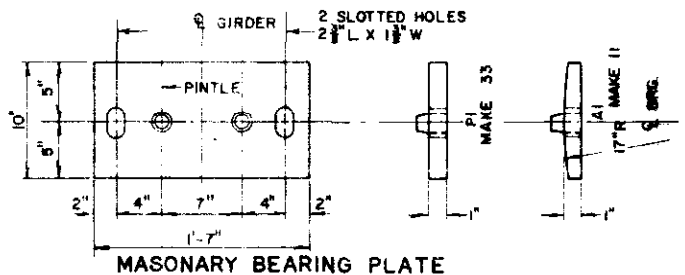
(R1) ELEVATIONS AT G GIRDER & TOP OF CONCRETE DECK SLAB DOES NOT INCLUDE DEAD LOAD DEFLECTION

POINT GIRD.	BRG. A1	1	2	3	4	5	6	7	8	9	P2	10	11	12	13	14	15	16	17	18	19	20	BRG. A4
IN	05.06	05.06	05.07	05.07	05.08	05.08	05.08	05.09	05.09	05.10	05.10	05.10	05.10	05.11	05.11	05.11	05.11	05.11	05.11	05.11	05.11	05.11	05.11
2C	05.28	05.31	05.35	05.39	05.43	05.48	05.52	05.56	05.60	05.64	05.68	05.73	05.78	05.82	05.87	05.92							
4S	05.24				05.24	05.25						05.25	05.26	05.26	05.27	05.27							

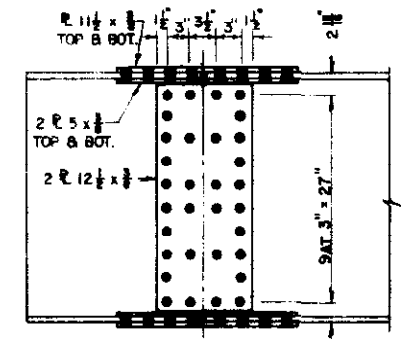
POINT GIRD.	BRG. A3	1	2	3	4	5	6	7	8	9	BRG. A4	
IN	05.11	05.11	05.11	05.12	05.12	05.12	05.12	05.13	05.13	05.14	05.14	05.14
2C	05.92	05.97	06.02	06.06	06.11	06.16	06.20	06.24	06.28	06.32	06.36	06.41
4S	05.27	05.27	05.28	05.28	05.29			05.29	05.30			05.30



PLAN

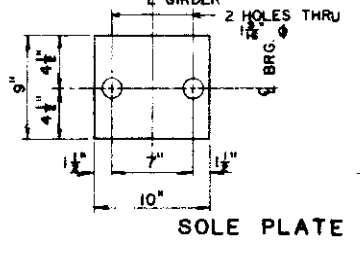


MASONRY BEARING PLATE



ELEVATION

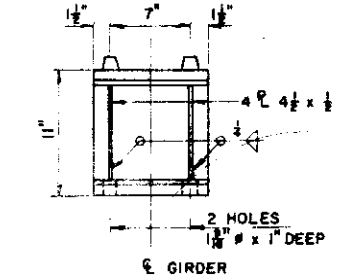
GIRDER SPLICE DETAIL



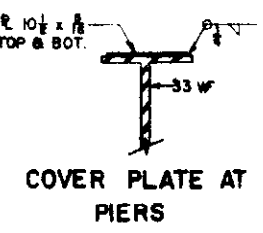
SOLE PLATE

TEMP. TABLE

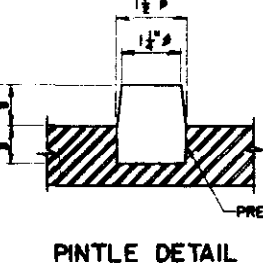
TEMP. F	DIMENS.
90°	3"
65°	3 1/2"
40°	3"



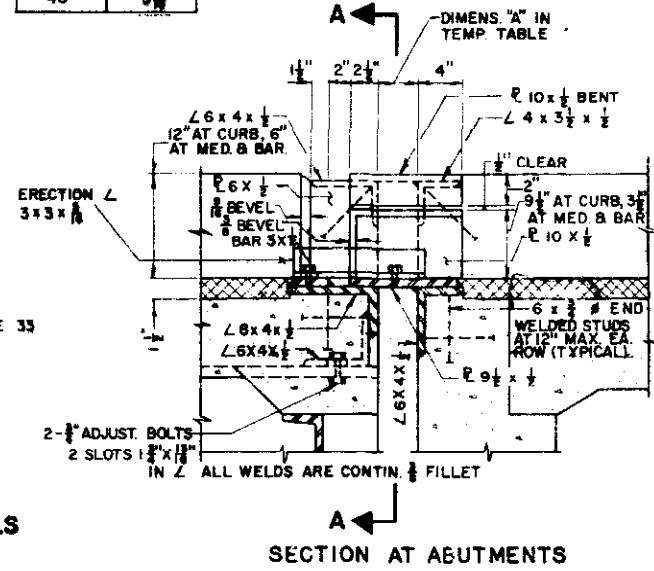
BEARING DEVICE DETAILS



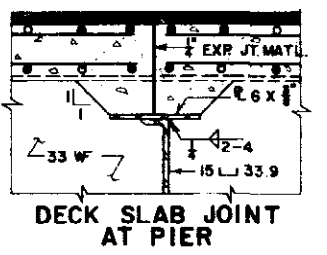
COVER PLATE AT PIERS



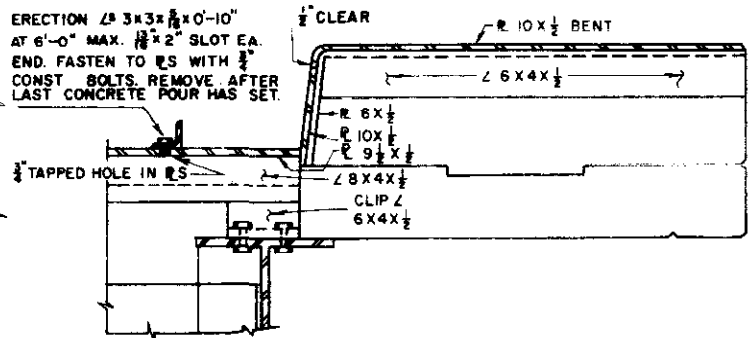
PINTLE DETAIL



SECTION AT ABUTMENTS

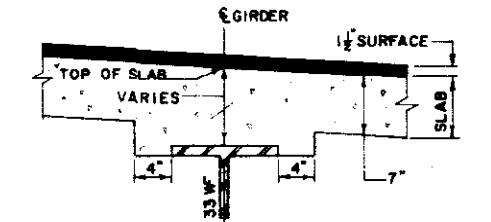


DECK SLAB JOINT AT PIER



SECTION A-A
EXTERIOR CURB SHOWN

EXPANSION DEVICE DETAILS



DECK SLAB DETAIL AT GIRDERS

DEPARTMENT OF HIGHWAYS
STATE OF COLORADO

GIRDER & STRUCTURAL
STEEL DETAILS

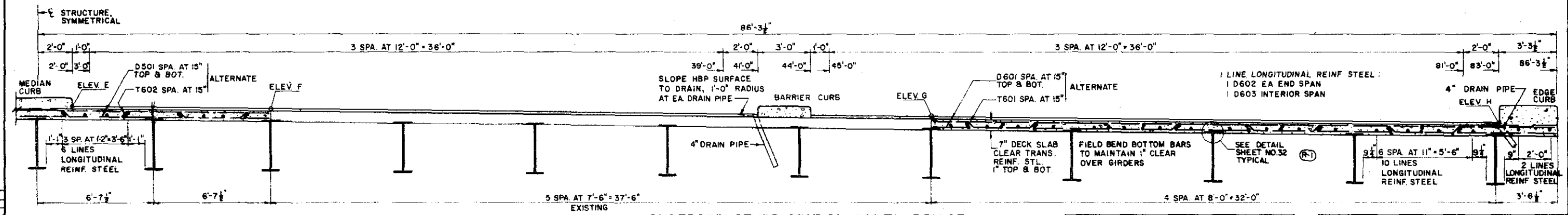
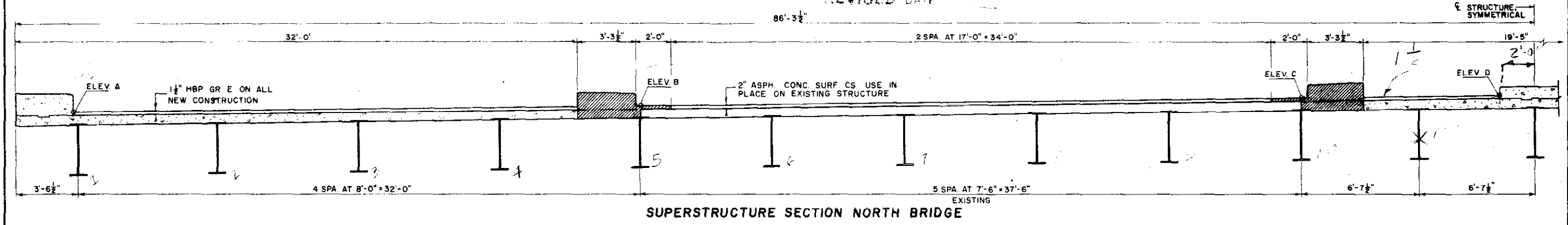
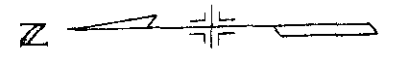
Across SOUTH PLATTE RIVER
Sta. 54+29.41 TO 54+33.84
Near DENVER Sec. 5 T. 4S. R. 88W

Designed by T.V.S. Approved by
Made by F.F.J. Bridge Engineer
Checked by G.D.C. Date: 19

NORTH F-16-EE
SOUTH F-16-EF
STRUCTURE NO.

FED. ROAD DIST. NO.	DIVISION	PROJECT NO.	SHEET NO.	TOTAL SHEETS
9	COLD.	U-012-2(13)	33	

AS CONSTRUCTED
 REVISED DATE

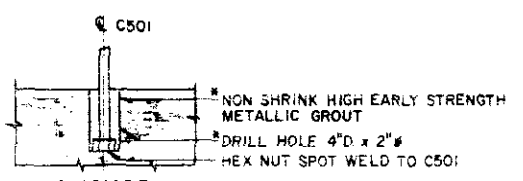


	ABUT NO 1	PIER NO 2	PIER NO 3	ABUT NO 4		ABUT NO 1	PIER NO 2	PIER NO 3	ABUT NO 4
NORTH SLOPE	0.00	0.00446	0.00996	0.0144	SOUTH SLOPE	0.00	0.00498	0.010486	0.0152
ELEV A	05.19	05.23	05.25	05.29	ELEV E	05.37	05.78	06.27	06.67
B	05.19	05.37	05.57	05.76	F	05.37	05.72	06.15	06.50
C	05.19	05.54	05.95	06.30	G	05.37	05.54	05.76	05.92
D	05.19	05.59	06.06	06.46	H	05.37	05.38	05.42	05.44

EXISTING
 REMOVE
 NEW CONST

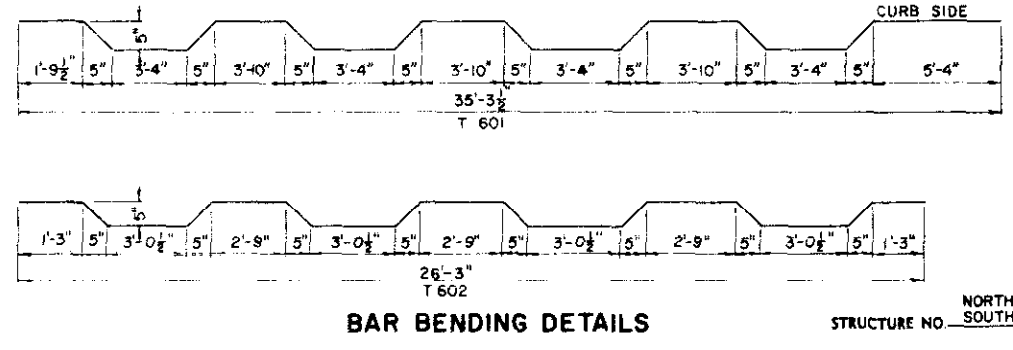
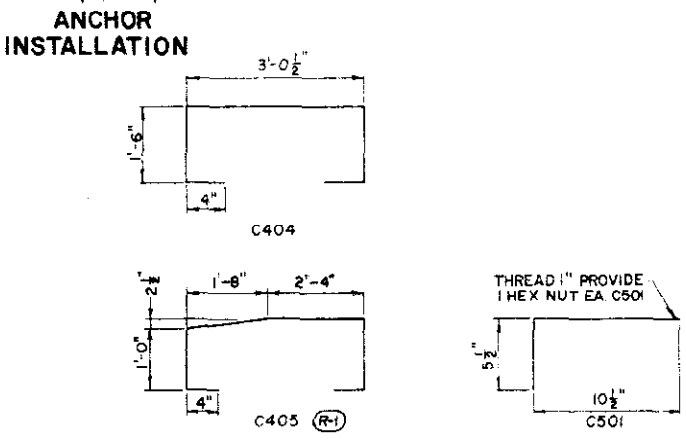
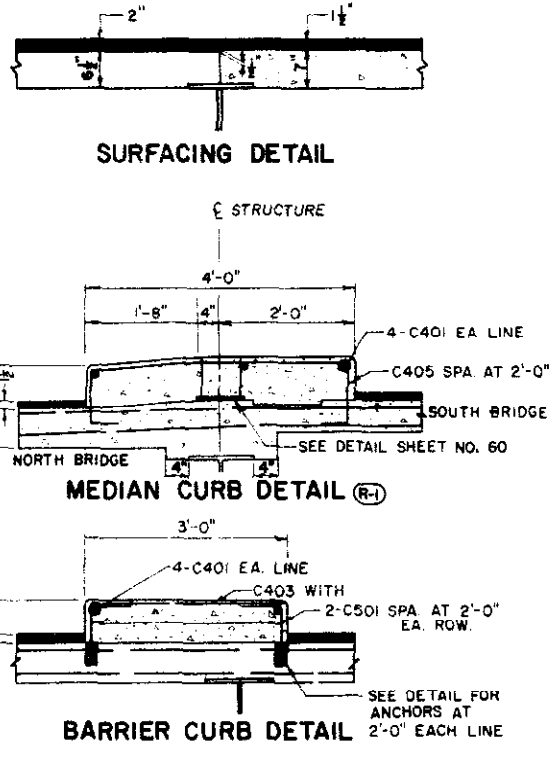
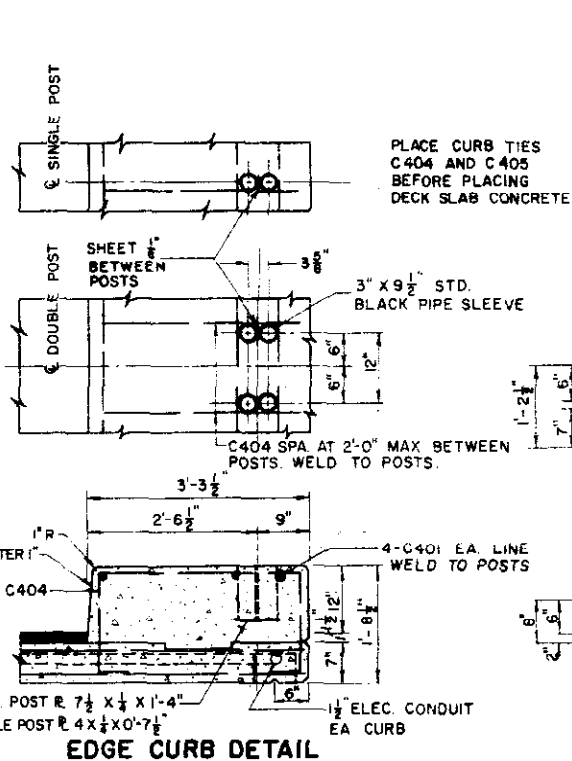
LEGEND

SUPERSTRUCTURE SECTION SOUTH BRIDGE



BAR LIST				
MARK	SIZE	SHAPE	NO. REQD	LENGTH
C401	4		68	40'-0"
C403	4		156	2'-9"
C404	4		180	6'-8 1/2"
C405	4		78	6'-5"
C501	5		312	1'-4"
D501	5		252	26'-4"
D601	6		504	35'-5"
D602	6		216	48'-4"
D603	6		108	58'-9"
T601	6		250	36'-8"
T602	6		125	27'-7"

BAR SUMMARY			
4860 L.F.	#4	AT	0.668 #/FT = 3245
7050 L.F.	#5	AT	1.043 #/FT = 7365
47,240 L.F.	#6	AT	1.502 #/FT = 71,000
TOTAL = 81,600			



THERE SHALL BE NO SEPARATE PAYMENT FOR ITEMS MARKED THUS (*). PAYMENT THEREFORE SHALL BE INCLUDED IN THE CONTRACT UNIT PRICE FOR ITEM 601, CONCRETE CL A

SUMMARY OF QUANTITIES			
SECTION	UNIT	ITEM	AMOUNT
403	TON	HBP (GR E)	58 180
411	GAL	LIQ ASPH MATL (RC-800)	148 482
① 509	L.S.	STR STEEL	L.S.
② 509	L.S.	STR STEEL (GALV)	L.S.
210	LIN FT	RES RAILING	375
513	EA	DRAIN PIPE 4 IN (-4 FT)	36 28
601	CU YD	CONCRETE CL. A	137 414
602	LB	REINF STEEL	80,152 → 81,600
606	LIN FT	60 RAIL TY 3A (DOUBLE)	150
613	LIN FT	1/2 IN ELEC CONDUIT	401 366

① DESIGN WEIGHT = 254,855 LB.
 ② DESIGN WEIGHT = 2,865 LB.

JEFFERSON ASSOCIATES
 CIVIL ENGINEERS

DEPARTMENT OF HIGHWAYS
 STATE OF COLORADO

SUPERSTRUCTURE
 DETAILS

Across SO. PLATTE RIVER ON 6TH AVE.
 Sta 54 + 95.41 TO 56 + 53.84
 Near DENVER, Sec 5 T. 4S. R. 68W

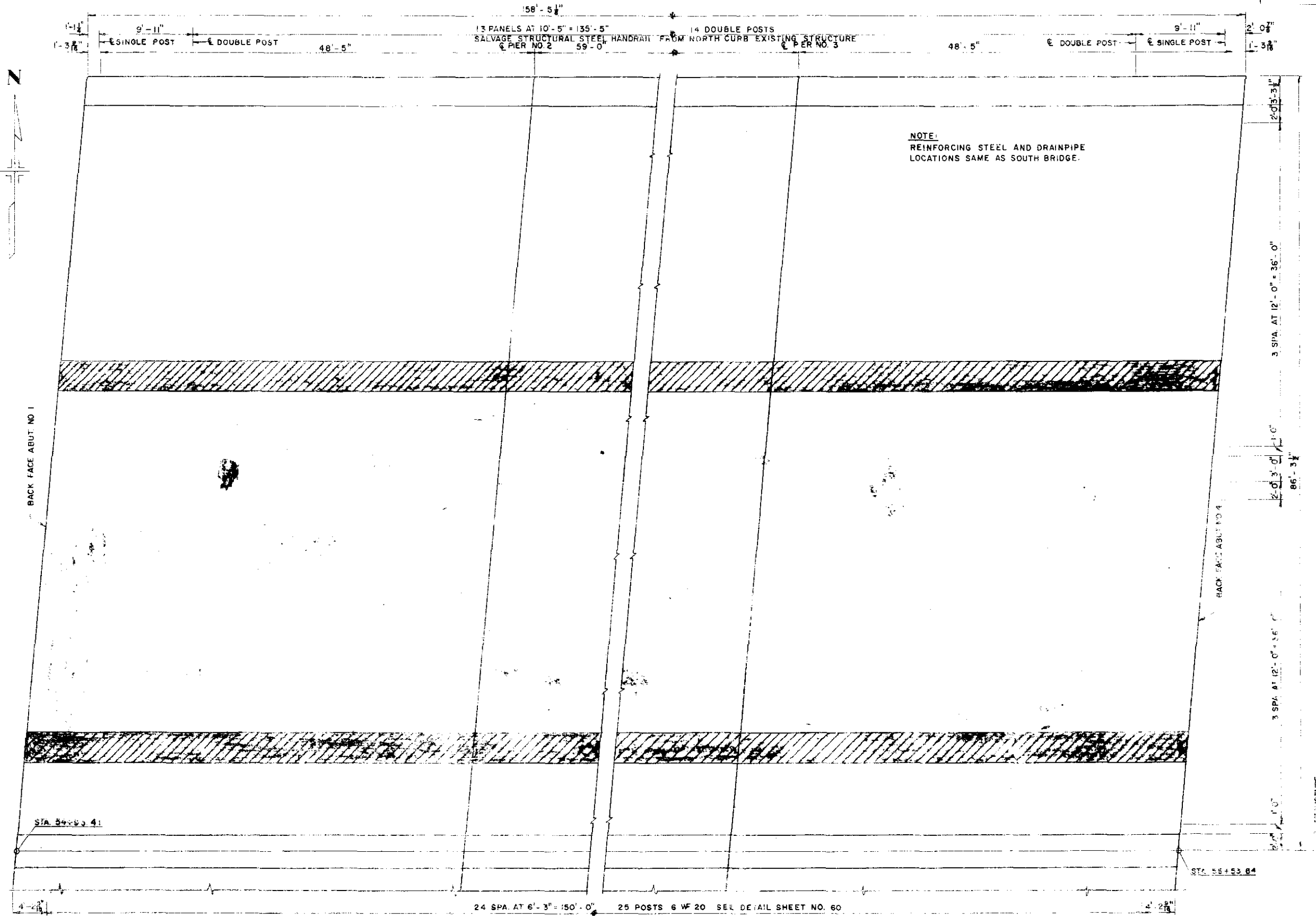
Designed by T.V.S. Approved by
 Made by G.A.M. Bridge Engineer
 Checked by G.D.C. Date: 19

STRUCTURE NO. NORTH F-16-EE
 SOUTH F-16-EF

REVISIONS

REVISIONS

FED. ROAD REG. NO.	DIVISION	PROJECT NO.	SHEET NO.	TOTAL SHEETS
9	COLO.	U012-2(13)	34	



HIGHWAY
C. H. 137

REV. BY	DATE	DESCRIPTION

JEFFERSON ASSOCIATES
CIVIL ENGINEERS

**DEPARTMENT OF HIGHWAYS
STATE OF COLORADO**

**DECK PLAN
NORTH BRIDGE**

Across SOUTH PLATTE ON 6th AVE
Sta. 54+93.41 TO 56+53.84
Near DENVER, Sec. 5 T. 4S. R. 68W

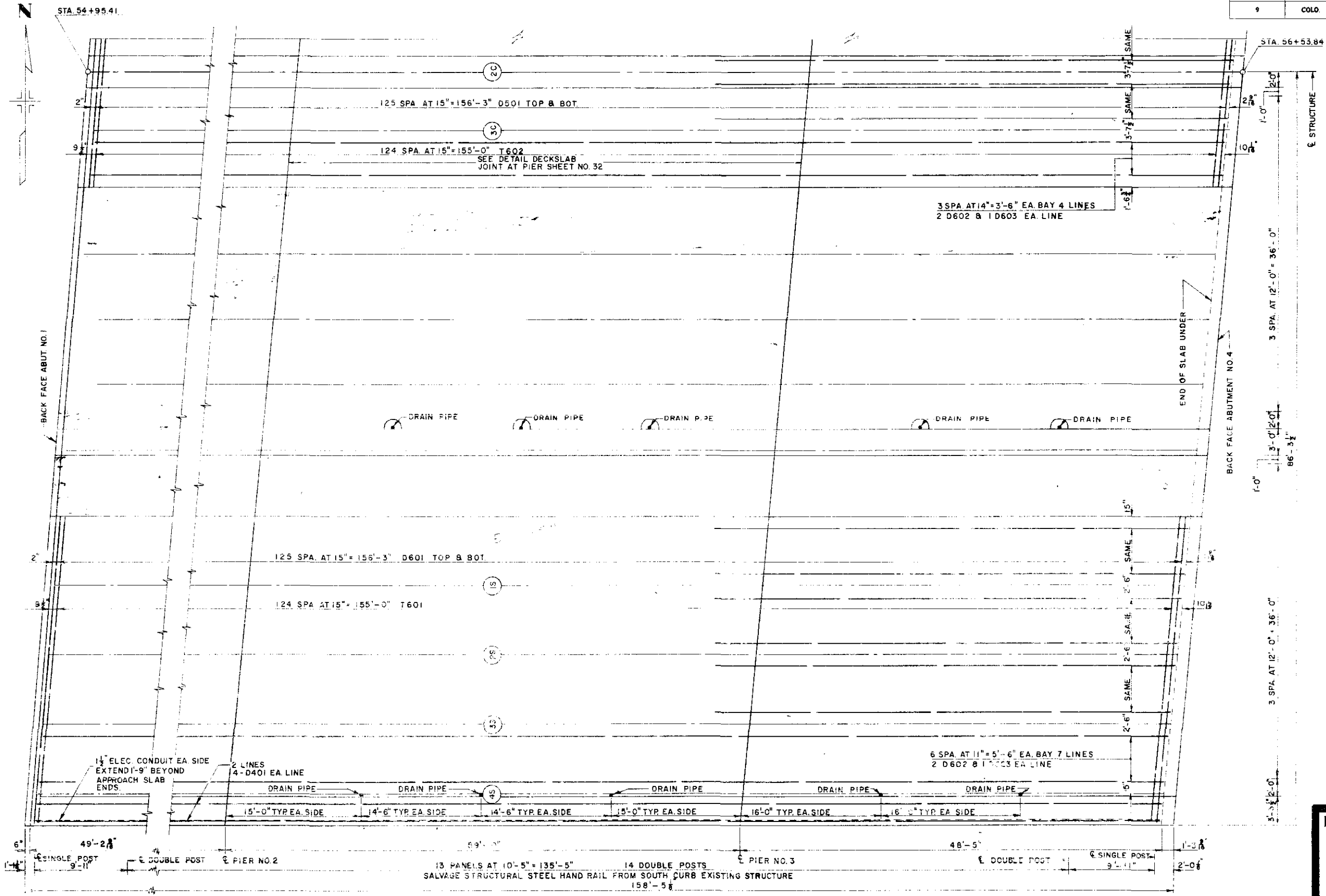
Designed by G.D.C. Approved by _____
Made by F.F.J. Bridge Engineer
Checked by T.V.S. Date: _____ 19__

STRUCTURE NO. NORTH F-16-EE
SOUTH F-16-EF

REVISIONS

REVISIONS

FED. ROAD REG. NO.	DIVISION	PROJECT NO.	SHEET NO.	TOTAL SHEETS
9	COLO.	U 012 - 2(13)	35	



JEFFERSON ASSOCIATES
CIVIL ENGINEERS

DEPARTMENT OF HIGHWAYS
STATE OF COLORADO

DECK PLAN
SOUTH BRIDGE

Across SOUTH PLATTE ON 6th AVE.
Sta. 54+95.41 TO 56+53.84
Near DENVER Sec. 5 T. 4S. R. 68W

Designed by GDC Approved by
Made by R.L. Bridge Engineer
Checked by T.V.S. Date: 19

NORTH F-16-EE
STRUCTURE NO. SOUTH F-16-EF